



Making it better **now.**

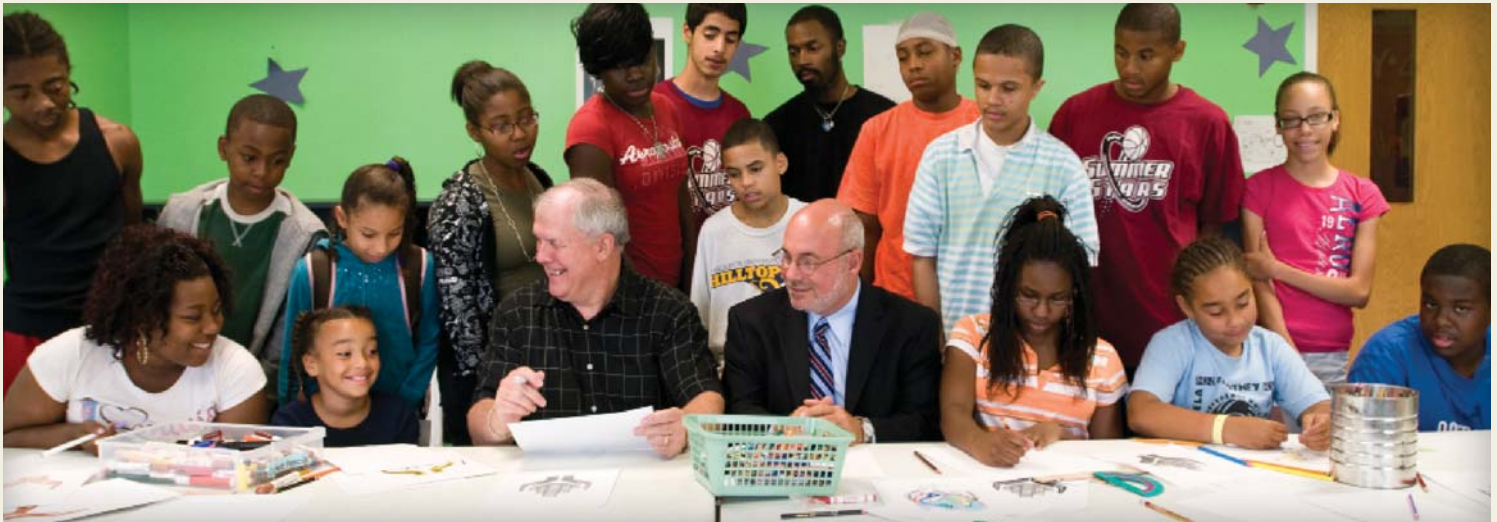
ANNUAL REPORT 2009



COMMUNITY ADVOCATES
Where Meeting Basic Needs Inspires Hope

Community Advocates is the largest human needs advocacy agency in Wisconsin and one of the few remaining organizations of any kind that still **welcomes walk-in clients five days a week.**

In 2009, Community Advocates provided services to **75,000 individuals**, nearly 50% of all Milwaukeeans living in poverty assisted **9,000 people** with applications for energy assistance answered more than **11,000 calls** through the Milwaukee Women's Center's 24-hour domestic violence crisis line



Dear Friends of Community Advocates,

We could look back at the events of 2009 and think that little has changed. Milwaukee is still grappling with the ongoing difficulties of potential homelessness because of foreclosures, evictions and job loss. Domestic abuse is on the increase, in part because of the frustrations and insecurities associated with these same issues. Incarceration rates indicate that too many individuals in our community pay a unique price because they suffer from mental illness, are poor and/or undereducated and have limited access to services and programs that can help transform their lives. Too many are trying to make do with too little.

However, Community Advocates will not look back. Our vision propels us to address today's problems and tomorrow's solutions. We have increased staff and services to meet the growing needs of our community and neighborhoods. We are giving hope and assistance to the increased numbers of Milwaukeean seeking help, some for the first time, so they can overcome crisis and emerge triumphant and self-sufficient, ready to reestablish themselves in a new tomorrow with the resources they need to ensure success.

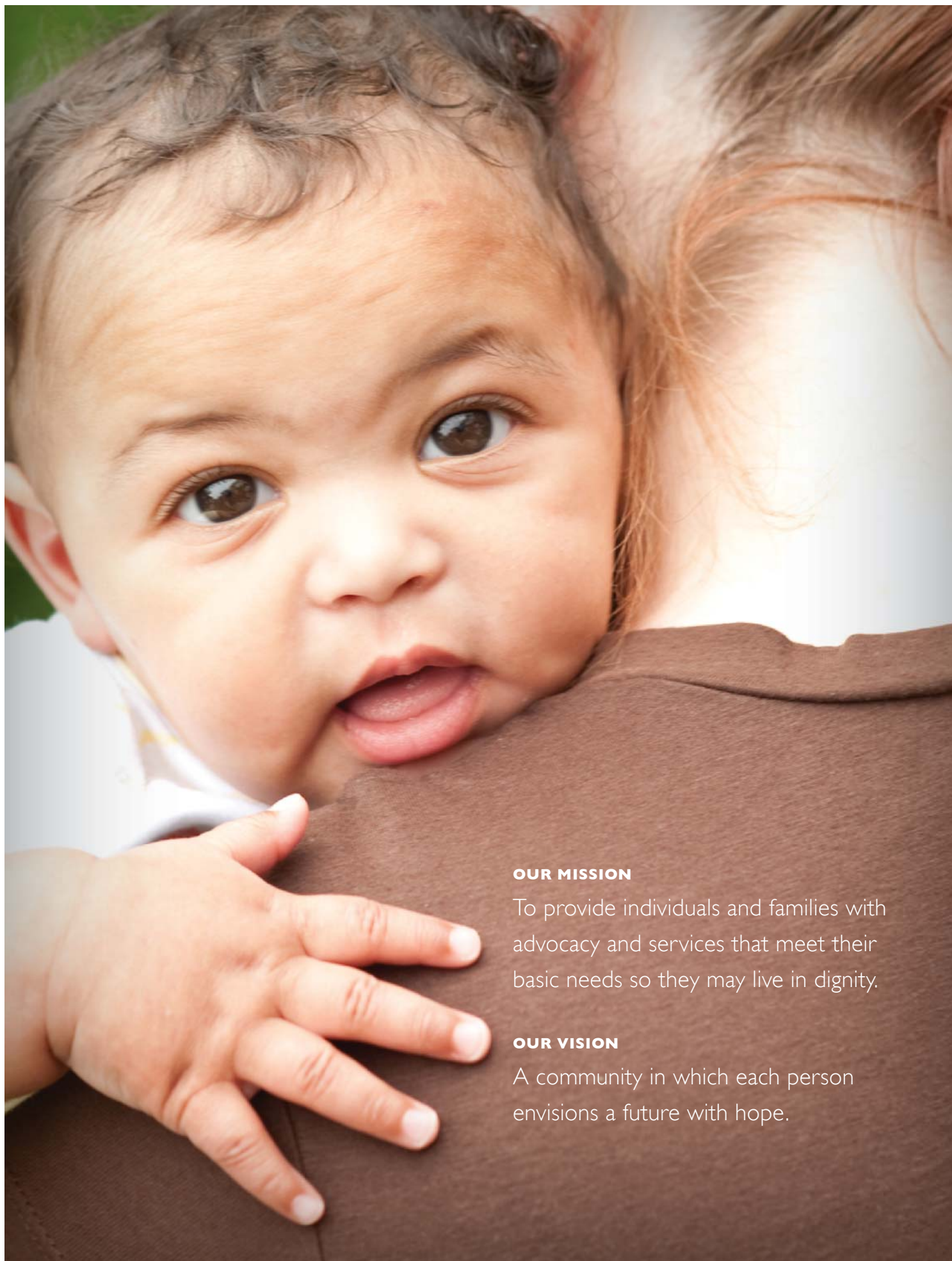
In 2009, we completed seamless mergers with two other agencies: **Justice 2000** and **Horizons House**. These agencies now function as strategic divisions providing targeted assistance to their traditional client base. And, because of the advantages of integrated, internal referrals, our staff can effect immediate and efficient access to the supportive services available through Community Advocates' more than 50 human needs programs.

Our staff is working harder and working smarter. Their capacity for caring and their dedication to assist the thousands of Milwaukeean in need is boundless. We are not content with asking our clients to "just hang on until it gets better" — we are making it better **now**. We can do this because of you.

We want to thank you — our friends and partners — for your concern, your compassion, and your support. We hope that you will use this Annual Report to review the progress we have made during this pivotal year.


Thomas Brophy
PRESIDENT


Joseph L. Volk
CHIEF EXECUTIVE OFFICER



OUR MISSION

To provide individuals and families with advocacy and services that meet their basic needs so they may live in dignity.

OUR VISION

A community in which each person envisions a future with hope.

COMMUNITY ADVOCATES

Programs and Services

For more than 30 years, Community Advocates has set the highest standards for meeting people's basic needs and helping them achieve self-sufficiency. From housing to health care to public policy advocacy, Community Advocates provides services directly and indirectly, helping to build and maintain cooperative networks among human service providers.

Major Service Areas

1. **Housing** 10 programs serve a range of housing needs including homelessness, home loans, rent abatement, tenant/landlord counseling, relocation, and crisis intervention.
2. **Women's Services** 11 programs provide emergency shelter and intervention, prevention and treatment services for women victims of domestic violence, their children and their batterers.
3. **Behavioral Health** 6 programs provide specialized case management and services for people who are homeless as a result of mental illness.
4. **Health Care** 3 programs assist over 1,000 clients per year through health care enrollment for kids and families, hospitalization issues, and Medicaid outreach.
5. **Disabilities** 3 programs provide assistance and advocacy for those eligible for public disability benefits through Social Security.
6. **Utilities** 6 programs help clients avoid service interruption and disconnection.
7. **Justice 2000** 9 programs assist low-income Milwaukeeans suffering from mental illness with pre-trial and community re-entry issues.
8. **Public Policy Institute** develops strategies and acts to bring about needed social policy changes that meet the basic needs of the underserved and help reduce poverty.

Collaborations

Community Advocates serves as the lead agency for and/or helped establish the following collaborations:

1. **Milwaukee Brighter Futures Initiative** is Milwaukee's largest coalition of child, youth, and family-serving agencies working together to prevent child abuse, teenage pregnancy, violence, and substance addiction.
2. **Milwaukee Continuum of Care** is the 100-member planning body for all homeless services in Milwaukee.
3. **HealthWatch** is an 80-member coalition of health care providers and advocates addressing responsible health care solutions for Milwaukee's low-income population.
4. **Milwaukee Addiction Treatment Initiative (MATI)** is a major system reform initiative of the Public Policy Institute established to improve addiction treatment, access and policy.
5. **Tobacco Use Prevention Outreach** is providing information and assistance to businesses and individuals about compliance with the State of Wisconsin's new smoke-free legislation.



“I don’t know what I would have done if I lost my home.
Community Advocates saved me and my two sons from living on the streets. Literally.”

CYNTHIA, WHO WAS NEARLY EVICTED AFTER LOSING HER JOB,
RECEIVED RENT ASSISTANCE UNTIL SHE FOUND NEW EMPLOYMENT.



HOUSING SERVICES

More Families Than Ever Find Help

11,000 calls were received by Community Advocates' Housing Services Department for assistance with tenant/landlord issues

4,000 households were saved from homelessness – either because they were provided with safe and affordable permanent housing or were given short-term assistance to maintain existing housing

The demand for Housing Services has been increasing since 2007, but limited community resources meant that Community Advocates could not always help everyone who needed short-term assistance. “It was very stressful and frustrating,” says Maudwella Kirkendoll, Director of Community Advocates’ Basic Needs Division.

“We would have someone come in who had worked 30 years at a job, lost the job, and needed immediate help. We had to tell them there was no assistance available.”

Program funding shortages continued through much of 2009. Then, in October, federal stimulus legislation allocated a three-year, \$6.9 million grant for Homeless Prevention and Rapid Rehousing to the City of Milwaukee to help alleviate housing needs. The Milwaukee Continuum of Care (CoC) represents the full spectrum of homeless services providers. Fifteen member organizations, including Community Advocates, met to discuss utilization trends, review best practices, and identify programming priorities for the funding.

Community Advocates used its portion (roughly \$2.7 million) to help pay back-rent for individuals and families, provide tenant/landlord mediation services, and to rapidly rehouse families staying in shelter. As a result, the number of people Community Advocates was able to help tripled.

Kirkendoll says many families are seeking services for the first time.

“In the past, we would typically see single mothers with children. Now, we are seeing families that have always been middle class.” All those we have helped, he says, suffered loss of income for some reason—a health care crisis, job loss or family emergency. “We’re not just helping anyone who walks through the door. These are people who truly need it. A lot of people have paid taxes all their lives and are now appropriately using the public assistance available.”

In 2009, Community Advocates helped prevent more than 600 evictions, allowing Milwaukee families to remain in their homes. Kirkendoll and his staff are happy to help.



MILWAUKEE WOMEN'S CENTER
A Division of Community Advocates

Where Abuse Ends and Hope Begins

Milwaukee Women's Center: 2009 By the Numbers

A Snapshot of Domestic Violence

30,000:

Approximate number of domestic violence incidents reported to law enforcement and referred to district attorneys offices in Wisconsin every year

10,000:

Approximate number of domestic violence incidents reported in Milwaukee County each year

67:

Sadly, the number of people in Wisconsin (12 in Milwaukee County), who died as a result of domestic violence in 2009 – the highest number of victims in 10 years

1 in every 4 women

will experience domestic violence in her lifetime

Because of you, the Milwaukee Women's Center is able to provide critical, life-saving services and safety to hundreds of women and children in the greater Milwaukee community – year after year.

11,229 calls fielded through the Milwaukee Women's Center's 24-hour domestic violence crisis line

137 women victims of domestic violence were provided shelter and comprehensive services

181 child victims of domestic violence were provided safety and support in emergency shelter

89 percentage of shelter clients who developed a safety plan prior to leaving shelter

65 number of women who received services and support through the Older Abused Women's Program, including crisis counseling, information, and referrals

72 number of low-income, homeless families that received housing counseling, including rent and utility assistance, to secure safe, stable housing away from their abusers

90 number of men who participated in the Nevermore Batterers Treatment Program

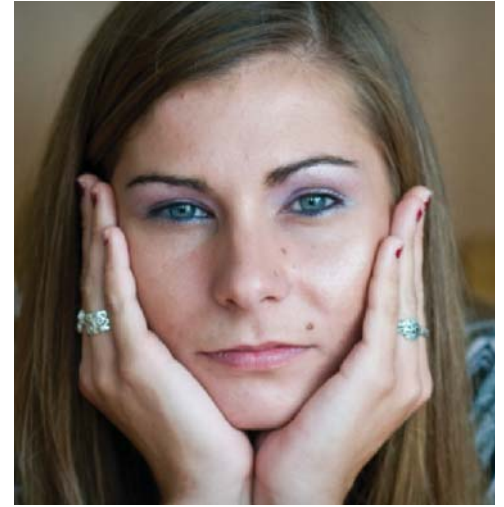
74 percentage of those men who completed all of the Nevermore Program requirements

69 percentage of men graduating from the program who had not re-offended six months after completing the program

We Appreciate Our Volunteers!

On behalf of the Board of Directors, staff, and clients, we extend our deep appreciation to our loyal volunteers who generously donated their precious gifts of time in 2009. Volunteers are a valuable extension of our staff and we are truly thankful for their special skills and dedication to our mission.

In 2009, **178 volunteers** donated **6,213 hours of their time**, which is **valued at \$125,809**. Thank You!



“The Milwaukee Women’s Center saved my life. I would not be here today, if I had not had such a safe place to go with my kids. We are here today because of you.”

MARIA, WHO CAME TO THE SHELTER WITH HER TWO YOUNG CHILDREN AFTER SUFFERING YEARS OF ABUSE BY HER HUSBAND
Working with staff to access resources to meet their emotional, physical, and financial needs,
Maria and her kids successfully transitioned to their own apartment.
Her future is now filled with hope, and her home is peaceful.





“It’s so good to have my sister back.”

JAMES, BETTY’S BROTHER, COMMENTING ON HER GRADUATION FROM HORIZONS
Because of her participation in Horizons’ inpatient and outpatient treatment programs, Betty is now in recovery after more than 50 years of drug and alcohol addiction.



HORIZONS

Creating Hope for Women and Children

Horizons Joins Milwaukee Women's Center Division

In 2009, 118 or **66% of clients** completed Horizons' addiction and addiction-related mental health treatment programs, a *very favorable completion rate* according to UCLA program evaluators.

In 2009, the Boards of Directors of Community Advocates and Horizons, Inc. negotiated and completed a merger between the two nonprofits.

Horizons was founded as an independent nonprofit in 1971 – as the first half-way house for women offenders in the State of Wisconsin, and as one of the first half-way houses in the nation. In the nearly 40 years since then, Horizons has evolved from a “half-way house” into one of Wisconsin’s primary community-based residential treatment facilities for women and their families.

With an emphasis on treating addiction and addiction-related mental health, the goal of Horizons’ programming is to give women the skills and empowerment they need to avoid future incarceration and become productive members of society.

The merger was finalized on September 1, 2009, when the Horizons Campus officially became an integral part of the Milwaukee Women’s Center Division of Community Advocates. Joe Volk, CEO of Community Advocates, had this to say about the merger:

“Horizons’ efforts to provide residential and outpatient mental health and addiction treatment services to women and their children will combine with and enhance the many supportive services provided by Community Advocates’ Milwaukee Women’s Center programming. Both groups of programs help empower women and their dependent children to achieve economic and emotional independence, while maintaining safe, secure, crime-free, and drug-free lives.”

The more than 40 Housing, Utilities, Health Care, and other assistance programs offered by Community Advocates will increase the accessible resources available to the women residents of Horizons.

JUSTICE 2000

Advocating for Treatment and Alternatives to Incarceration



JUSTICE 2000

A Division of Community Advocates

**Where Court Alternatives
Promote Health and Safety**

In 2009, **97% of Justice 2000's clients avoided new arrests** while they were under the supervision of Justice 2000's Case Managers.

Justice 2000's programs providing alternatives to incarceration created **9,752 community service hours** and saved **68,654 jail bed days** (representing a **savings of \$6,362,869.47 in tax payer dollars**).

In 2009, Justice 2000 and Community Advocates completed a plan to merge agencies in order to better serve low-income and at-risk individuals.

It is well known that the effects of poverty often contribute to harmful choices, adverse behavior and limited access to restorative services and treatment.

In the few short years since its founding, Justice 2000 developed the framework for what has become Milwaukee County's nationally recognized pre-trial service programs. These programs are designed to expand opportunities for the safe release and community integration of criminal offenders who are often handicapped with addictions, mental illness and lack of basic resources to successfully function independently in the community.

Community Advocates has a long and distinguished history of effectively serving Milwaukee's low-income and at-risk populations with an array of direct services and resources needed to overcome the most harmful consequences of poverty.

Effective pre-trial services require prompt access to the whole range of community services and treatment for the pre-trial population. The merger of Justice 2000 with Community Advocates paves the way for creating new and innovative quality programming and service delivery.

The leadership of both Community Advocates and Justice 2000 quickly recognized the compatibility of missions and mutual advantages of combining the services and resources of both organizations. On a practical level, shared administrative functions and consolidated resources reduce costs while improving service integration. Also, combined efforts will exert a greater influence on public policies that affect the issues of poverty, health care and criminal justice for the greater good of the entire Milwaukee community.

Community Advocates welcomes the new Justice 2000 Division to its family of services.



“This letter is a thank you so much for what you have done. I know you was [sic] only doing your job, but that help [sic] me a lot. I never had that in my life. ...I know my son misses his daddy taking him to school everyday.”

AN EXCERPT FROM **SAMUEL'S** LETTER TO HIS JUSTICE 2000 CASE WORKER

Samuel was detained in jail until his case – a misdemeanor marijuana possession charge – was heard, because he could not afford his bail.

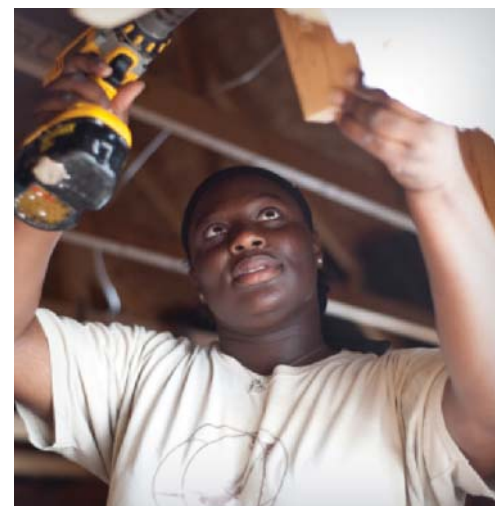




“I always wanted to do work like this. But I never knew how. Now I feel like I’m doing something that matters. I love coming to work every day.”

WILLIAM, WHO IS BEING TRAINED IN CONSTRUCTION AND HOME-BUILDING BY THE MILWAUKEE AREA WORKFORCE INVESTMENT BOARD’S *MILWAUKEE BUILDS* PROGRAM.

Milwaukee Builds is a Transitional Jobs Program supported by the City of Milwaukee and WI Department of Workforce Development for low-income unemployed individuals who need work and skills development. Participants can earn \$8-12 per hour and work up to 30 hours a week learning various construction-related skills. Photos feature program participants.



PUBLIC POLICY INSTITUTE

Helping Families by Helping to Create Transitional Jobs



COMMUNITY ADVOCATES

Public Policy
Institute

Community Advocates' Public Policy Institute helped develop the legislation that created **4,000 new transitional jobs** in Wisconsin.

In 2009, Community Advocates' Public Policy Institute continued its groundbreaking work to provide effective advocacy to influence public policy change that will positively benefit Milwaukee and Wisconsin's poorest and neediest families.

Wisconsin and the United States are suffering from uncommonly high unemployment. The job gap — the difference between the number of unemployed men and women who need jobs, and the jobs that are available to them—has also risen to unprecedented levels.

To help get people back to work, Community Advocates' Public Policy Institute has worked closely with Wisconsin lawmakers to create transitional jobs: wage-paying jobs that allow low-income, unemployed men and women to do useful work and support themselves and their families. Transitional jobs — in combination with earning supplements, affordable childcare and affordable health care — are key to reducing poverty and increasing employment.

The Public Policy Institute's work on transitional jobs has already resulted in two significant pieces of legislation:

In 2009, Public Policy Institute Director David R. Riemer drafted language for a 2009-11 Wisconsin State budget amendment — inserted into the budget by Sen. Spencer Coggs (D-Milwaukee) — which created the Transitional Jobs Demonstration Project authorizing up to 2,500 jobs slots. Riemer subsequently worked with Rep. Tamara Grigsby (D-Milwaukee) to draft the *Wisconsin Family Jobs Act*. The Act removed the demonstration project's 2,500 job cap.

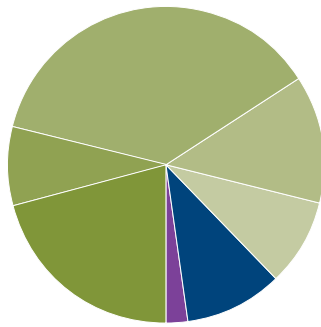
As a local leader on transitional jobs, the Public Policy Institute helped to found the *Milwaukee Transitional Jobs Collaborative*, which seeks to obtain state and federal programs and funding to make transitional jobs available to Wisconsin's unemployed.

Consolidated Statements of Financial Position

Years Ended December 31, 2009 and 2008

| ASSETS | 2008 | 2009 | LIABILITIES AND NET ASSETS | 2008 | 2009 |
|--|---------------------|---------------------|---|---------------------|---------------------|
| Current Assets: | | | Current liabilities: | | |
| Cash and cash equivalents | \$ 740,005 | \$ 390,944 | Current portion of notes payable | \$ 47,284 | \$ 20,453 |
| Investments | 478,065 | 556,054 | Line of credit | — | 200,000 |
| Receivables: | | | Accounts payable | 84,743 | 111,076 |
| Grants | 465,346 | 1,075,966 | Subcontracts payable | 203,663 | 214,575 |
| Pledges – Current Portion | 311,127 | 512,170 | Accrued payroll and related liabilities | 206,872 | 207,148 |
| Other | 7,809 | 11,311 | Accrued pension | 50,083 | 79,928 |
| Prepaid expenses and deposits | 6,649 | 14,384 | Deferred revenue | 24,294 | 45,000 |
| Total current assets | 2,009,001 | 2,560,829 | Other accrued expenses | 6,393 | 26,206 |
| | | | Total current liabilities | 623,332 | 904,386 |
| Restricted Assets: | | | Client trust payable | 190,390 | 204,141 |
| Restricted cash | 190,390 | 204,141 | Notes payable, less current portion | 552,175 | 566,452 |
| Restricted Colortyme: | | | Total liabilities | 1,365,897 | 1,674,979 |
| Cash and cash equivalents | 34,315 | 12,016 | Net assets: | | |
| Certificates of deposit | 122,502 | 97,891 | Unrestricted | 1,042,045 | 1,822,181 |
| Total restricted assets | 347,207 | 314,048 | Temporarily restricted | 1,012,970 | 872,563 |
| | | | Total net assets | 2,055,015 | 2,694,744 |
| Property and equipment: | | | TOTAL LIABILITIES AND NET ASSETS | \$ 3,420,912 | \$ 4,369,723 |
| Land, buildings and improvements | 805,316 | 1,341,282 | | | |
| Furniture and equipment | 199,542 | 412,522 | | | |
| Vehicle | 17,143 | 17,143 | | | |
| Construction in progress | — | 71,524 | | | |
| Total property and equipment | 1,022,001 | 1,842,471 | | | |
| Less accumulated depreciation | 325,316 | 422,786 | | | |
| Property and equipment – Net | 696,685 | 1,419,685 | | | |
| | | | | | |
| Other assets: | | | | | |
| Goodwill | 118,402 | 75,161 | | | |
| Pledges receivable, less current portion | 249,617 | — | | | |
| Total other assets | 368,019 | 75,161 | | | |
| TOTAL ASSETS | \$ 3,420,912 | \$ 4,369,723 | | | |

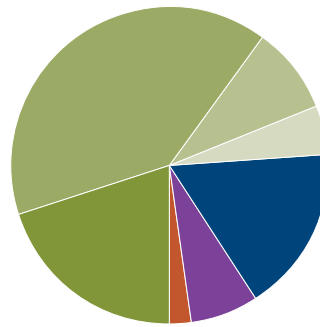
What Funds Pay For



Program Services 88%
 Basic Needs 21%
 Behavioral Health 8%
 Community Coalitions 37%
 Milwaukee Women's Center 13%
 Public Policy Institute 9%

Administration 10%
Fundraising/Other 2%

Where Funds Come From



Government Grants 74%
 Federal 20%
 State 40%
 County 9%
 City 5%

Contracts 17%
Foundations/Corporations/Individuals 7%
Other 2%

INCOME/EXPENSES 100% = \$10,114,115 Total

Major Revenue Sources

FEDERAL

Department of Housing & Urban Development
 Federal Emergency Management Agency
 SAMHSA

STATE OF WISCONSIN

Department of Administration – Division of Housing
 Department of Children & Families
 Department of Health Services
 Department of Justice

MILWAUKEE COUNTY

Behavioral Health Division
 Management Services Division
 Division of Housing
 Economic Support Division

CITY OF MILWAUKEE

Department of Administration
 Community Development Block Grant
 Department of Administration
 Emergency Shelter Grant
 Department of Neighborhood Services

Housing Authority City of Milwaukee
 Department of City Development
 Homeless Prevention and Rapid Re-Housing
 Municipal Court

PUBLIC, PRIVATE and CORPORATE CONTRACTS

Aurora Health Care
 CHILD
 ColorTyme
 Continuum of Care
 Division of Children and Family Services
 Healthcare for the Homeless (PATH)
 Healthier Wisconsin – Project Heart
 Kenosha County – SSI
 Managed Health Services
 Public Service Commission
 UMOS
 United Way
 We Energies
 Wheaton Franciscan Healthcare



2009 Honor Roll of Donors

\$100,000+

Greater Milwaukee Foundation
Open Society Foundation
United Way of
Greater Milwaukee
Wildflower Communities

\$50,000+

Joseph & Vera Zilber
Family Foundation

\$25,000+

Associated Bank
Helen Bader Foundation

\$10,000+

Mr. Lynn Adelman
Daniel M. Soref Charitable Trust
Hunger Task Force
J. Jill Compassion Fund
of the Boston Foundation
Jane Bradley Pettit Foundation
Northwestern Mutual Foundation
Recognize ARC
The Windhover Foundation

\$5,000-\$9,999

Anonymous (2)
Richard & Nancy Brophy
CG Schmidt Construction, Inc.
The Gathering
Mrs. Gudrun Dawson
Ladish Company Foundation
Roundy's Foundation
Sandy & Mark Samse
Salvation Army
Stackner Family Foundation, Inc.
David & Julia Uihlein
Charitable Foundation
We Energies
Mr. & Mrs. Richard Weiss

\$2,500-\$4,999

Anonymous
Dickens Books, LLC
Ms. Andi Elliott
John T. & Suzanne S. Jacobus
Family Foundation
The Jewish Community
Foundation
*The Lucy & Jack Rosenberg
Charitable Funds*
Kohl's Department Stores, Inc.
Ms. Valerie Gabriel
North Shore Bank
in Honor of Richard Brophy
Peck Foundation
Pricewaterhouse Coopers
PyraMax Bank
Target
Mr. James Taylor
Zonta Foundation, Inc.

\$1,000-\$2,499

56th Street Collectors Club
American Red Cross
Anick & Associates
Anonymous (2)
AT&T
Judge Ellen Brostrom
Mr. & Mrs. Peter Bruce
Bucyrus-Erie Foundation, Inc.
Mr. John Czechan
Ms. Karen Dickinson
Direct Supply, Inc.
Extencicare
First Clearing, LLC
Foley & Lardner, LLP
Mr. & Mrs. Charles Gorham
Greater Milwaukee Association of
REALTORS Youth Foundation
Immanuel Presbyterian Church
Mr. Daniel Johnson
Mr. & Mrs. Ted Kellner
Tim & Teddi Kennedy
Bob & Pam Klein

Liz & Tim Kohler
Ms. Fran Hunter and
Mr. William Laatsch
Greater Milwaukee Foundation
Lawlis Family Fund
Mr. & Mrs. Andrew Lauritzen
Jim & Sue Lecher
Medical College of Wisconsin
Multiline Insurance Agency
PKWARE, Inc.
Park Bank Foundation, Inc.
Rexnord Foundation, Inc.
Jeff Rusinow Family Foundation
Security Insurance Services, Inc.
Sensient Technologies
Foundation
Shorewest Realtors
St. James Congregation
(Menomonee Falls)
Stephen Adams & Thelma Sias
The Skrypchak Group of
Morgan Stanley
Mr. Joseph Volk
Weiss Family Foundation

\$500-\$999

Anonymous
Ms. Carol Bastian
Mr. Maurice Berglund
St. Bernard Congregation
Mr. Jason Brame
Patrick Curley & Anne DeLeo
Department of Corrections -
Domestic Violence Workgroup
ENB Company, LLC
Ron & Debby Eaton
Mr. Jason Ellis
Mr. John Falk
Mr. Daniel Geigler
Ms. LaTrice Buck Hogan
Pam Frautschi & Richard Ippolito
St. Joseph's Congregation
Ms. Debra Kopaczewski
Ms. Laureen Lehnberg
MGIC

Jan & Vince Martin
Morgan Stanley
Ms. Mary Mowbray
Ms. Donna Neal
Northwestern Mutual Employee
Giving Campaign
New Berlin Heating &
Air Conditioning
Mr. Richard O'Connor
Ellie Graan & David Riemer
Rogers Memorial Hospital
Roundy's Supermarkets, Inc.
Pick 'n Save We Care
Russell Investment Group
Mr. Robert Samse
Sisters of the Divine Savior
David Weissman &
Miriam Schechter
Ms. Rose Spang
St. Thomas of Canterbury
Episcopal Church
UMOS, Inc.
Ms. Kris Uhen
United Way of
Metropolitan Chicago
Ms. Sylvia Zalewski

\$250-\$499

Darla Hium & Tom Ament
Association for
Women Lawyers, Inc.
Atkinson/Ells
Charitable Foundation
Aurora Healthcare
Ms. Carol Bastian
Ms. Judith Beeckler Tod
Mr. John Bohler
Mr. T. Michael Bolger
Thomas & Suzanne Brophy
Mr. Timothy Charek
Ms. Kathryn Cieszki
Beverly & Ervin Colton
Deloitte Tax, LLP
Delta Sigma Theta Sorority, Inc.
Ms. Donna Drosner

Evolution Retirement Services, Inc.
 Ms. Colleen Gaffney-Pendzich
 Harry & Vivian Guzniczak
 Mr. Tim Halverson
 Deborah & Steve Holter
 Ms. Venus Jones
 Ms. Amy Kaster
 Charles Kahn & Patti Keating Kahn
 Mr. Maudwella Kirkendoll
 Knights Templar
 Francis Lewandowski
 Nancy & Jerry Lewin
 Ms. Claudia Lipusch
 Glen Haase & Ruthie Lombardo
 Ms. Jeanne Lowry
 Lutheran Home
 Mr. John McCormack
 Ms. Molly Foundation
 Molly Maid
 The OAC Employee Team
 Sandy & Allan Pasch
 Ms. Sue Potts
 Proper Attire Boutique
 Quad/Graphics
 St. Robert Parish (Shorewood)
 Ms. Lois Stanton
 Mr. Jerry Stepaniak
 Mr. & Mrs. Daniel Switalski
 U-TURN, LLC
 UnitedHealth Group
 Ms. LaShawndra Vernon
 Weiss Berzowski Brady, LLP
 Wellpoint Foundation
 The Wendt Family
 Wheaton Franciscan Healthcare
 Mr. Gary White
 Ms. Palone Williams

\$100-\$249

Dan Sargeant & Elfrieda Abbe
 Ms. Peggy Ann
 Ms. Nedda Avila
 Ms. Sheila Beck
 Ms. Linda Bell
 St. Benedict Community Meal
 Ms. Sue Bennett
 Larry Dalton & Lisa Berman
 Mr. & Mrs. Michael Berzowski
 Christopher & Lisa Binder
 Mr. Louis Black
 Ms. Trisha Blavat
 Mr. Rick Bongiorno
 Debbie & Michael Borchardt
 Boston Store
 Tom & Joanne Brown
 Mr. John Burdge
 Mr. Fred Burg
 Al & Sue Burgemeister
 Canon
 Mr. James Carpenter
 Arun & Cecelia Caspram
 Liz & Greg Charewicz
 Ms. Sandra Charlton
 Mr. Robert Cherry
 Marty & Mary Lynne Collins
 Cousins Submarines Inc.
 Foundation
 William & Margaret Crowley
 Mr. Larry Dalton
 Davis & Kuelthau, S.C.
 Mr. David Dawson
 Ms. Mitzi Dearborn
 Ms. Diane DeWindt-Hall
 Ms. Ramona Dicks-Williams
 Ms. Debra Dimberg
 Ms. Kathy Dirkse
 Anne & Eric Dorn
 Mr. Lindsey Draper
 Ms. Judith Drinka
 Ms. Erin Dunbar
 Mr. Tom Feiza
 Ms. Nancy Fenning

Ms. Patricia Flannery
 Ms. Colleen Foley
 Mrs. Magda Franco-Banaszak
 Ms. Katie Gaulin
 Mr. Ken Germanson
 Heiner & Barbara Giese
 Ms. Karen Green
 Ms. Trinette Green
 Greenfield Women's Club
 Steve & Helene Gyarmaty
 Ms. Janis Hancock
 John & Kathleen Hanneman
 Dr. Stephen Hergarten
 Ms. Gloria Harris
 Ms. LaVerne Hayes
 Ms. Susan Heffron
 Ms. Rebecca Hobart
 Ms. Sybreana Holt
 Ms. Karen Hung
 Mrs. Mildred Hyde-Demoze
 Ms. Erin Jacyna
 James Imaging Systems
 Mr. Wayne Jefferson
 Eric & Patti Jernberg
 St. Jerome Congregation
 (Oconomowoc)
 Ted & Mary John
 Mr. Russ Kania
 Ms. Lynnea Katz-Petted
 Mr. Timothy Kidd
 Ms. Elizabeth Kohler
 Mr. Theodore Kraig
 Ms. Linda Krause
 Ms. Jaclyn Kuhl
 Ms. Laura Schulteis Kwaterski
 Ms. Ann Laatsch
 Mr. Andrew Lampereur
 Dr. Jay Larkey
 Mr. Peter Layde
 Ms. Elinor Lichtman
 Mr. David Lillich
 Ms. Julie Lovestock
 Leslie & Roxann Lucas
 Ms. Donna Martin
 Ms. Carmen Martinez

Mr. Jeffrey Martz
 Ms. Patricia Matthews
 Mr. Leonard McGhee
 Linda & John Meurer
 Paul & Elise Meyer
 Ms. Gayle Miles
 Mill Valley Company
 Chuck & Pat Millmann
 Ms. Mary Mussel
 Ms. Sharon Neuman
 Mr. Harold Oberlander
 Richard & Jean Olson
 Parents Plus
 Ms. Hannah Picchiottino
 Mr. Steven Piehl
 Mr. John Place
 Ms. Rose Purpero
 Ms. Anne Purtell
 Quad/Graphics, Inc.
 Mrs. Mary Kathleen Ramsey
 Ms. Anna Retzke
 Mr. Delbert Reynolds
 Ms. Shannon Rolf
 Royal Enterprizes
 Ms. Shirley Sharp
 Ms. Margaux Shields
 Chia Jung Shih
 Ms. Esther Shin
 Mr. Stephen Simon
 Mr. Timothy Somers
 Mr. Thomas Stanton
 L. William & Kathleen Staudenmaier
 Mr. Eric Steele
 Chris & Barbara Steinmetz
 Ms. Kathleen Thiemann
 Ms. Jo Ann Touchett
 Ms. LaShawndra Vernon
 Ms. Mylas Waters
 Wauwatosa Savings & Loan Foundation
 Ms. Sandra Winiarski
 Mr. Mark Winter
 Rich & Nancy Young
 Mr. John Zaganczyk

\$50-\$99

Allstate Giving Campaign
Ms. Madelene Amos
Alfred & Jacquelyn Anderson
Aurora Health Care
Joseph & Katherine Cayen
Ms. Shauna Baldwin
Ruth & Lonnie Behrens
Ms. Pamela Bell
Ms. Lynn Berkopec
Mr. & Mrs. Philip Blank
Holly & John Bonavia
Mr. Marrel Cain
Mary & David Carlson
Ms. Linda Cobbs
Eric & Miriam Cohen
Tom & Denise Curtis
Mr. Myron Davis
Dr. Michael & Johanna Deeken
Ms. Melody Dixon
Dr. Gerald & Irene Eagan
Ms. Laurie Eimermann
Mr. Gordon Eisendrath
Mr. Kevin Englebert
Ms. Diana Espinoza
Yuri Fu
Phil & Kathy Gaffney
Mr. Sheldon Gendelman
Mrs. Lynn Gierach
Greg & Doris Glesner
Ms. Rayven Gordon
Gerald Grackowski
Ms. Mattie J. Hall
Harley-Davidson Retirees Group
Ms. Elizabeth Harris
Ms. Jennifer Harrison
Harwood Place, Inc.
Mrs. Kathy Heidt
Ms. Judith Hestoft
Wally & Mary Ann Hesselbein
Nate & Dolores Holman
Ms. Natalie Isensee
Michael & Angela Jansen

Mr. Mario Johnson
Veronica & Matt Junker
Roy & Kim Kendall
Ms. Margo Kirchner
Harvey & Karole Klind
Ms. Mary Klug
Gary & Laurinne Krentz
Tim & Mary Kubiak
Ms. Suzanne Kubisiak
Ms. Natalie Kuras
Mr. William Lynch
Ms. Paula Macomber
Ms. Bagwajikwe Madosh
Ms. Lois Malawsky
Ms. Pamela Martin
Ms. Juliette Martin-Thomas
Mrs. Adrienne Marty
William & Robin Mayrl
Linda & Abe McCabe
Mr. Dan McCarthy
Ms. Shirley McClendon
Ms. Genevieve McClintock
Michael & Heather Mclaughlin
Ms. Maripat Monahan
Geri Naymick
Ms. Diane O'Donnell
Ms. Mary Ann Patti
Ms. Jodi Pfeil
Mr. Ronald Pinto
Ms. Sandra Quirk
Ms. Patricia Ranz
Ms. Vanessa Reed
Ms. Aileen Rockjordan
Mr. Jeff Rose
Ms. Janet Ruhsam
Ms. Elnora Rushing
Ms. Barbara Ruth
Mr. James Schaefer
Sisters of St. Francis
Mr. Daniel Stotmeister
Superior Support Resources, Inc.
Karen & Sandy Swartzberg
Ms. Pamela Talbert
Ms. Ericka Thomas

Ms. Connie Tipton
Oyweda & Archie Trice
Mr. & Mrs. Richard Truitt
Ms. Marilyn Uhen
Mr. William Uhen
Ms. Michelle Usadel
Ms. Denise Walkowiak
Charles & Elissa Weber
Ms. Yvonne Werner
Ms. Katie White-McNeale
Ms. Heidi Wick-Spoerl
Ms. Nancy Wieland
Ms. Courtney Williams
Ms. Debra Williams
Ms. Marissa Williams
Mr. Samuel Wisotzkey
Women of Redemption
Lutheran Church
Len & Lynne Zacharias
Ms. Natalie Zavada

\$25-\$49

Seymour & Shirley Abrahamson
Ms. Nina Alesci
Bill & Vicki Allen
Ms. Victoria Amos
Ms. Mary Ann Barragry
Ms. Polly Belcher
Michael & Dawn Bench
Ms. Mary Benes-Malone
Angela & George Bowman
Judge Kitty Brennan
Ms. Sarah Broker
Ms. Doris Johnson Browne
Ms. Theresa Brunson
Ms. Geraldine Bulger
Ms. Shelley Callaghan
Ms. Shawanna Campbell
Sister Anne Margaret Carmody
Dagmar Carnduff
Ms. Laura Chase
Ms. Mary Christman
Ms. Maureen Coffey
Ms. Lena Cole

Congregation of St. John's
Catholic Church
Ms. Lisa Carlson Cummings
Ms. Rose Daitzman
Ms. Barbara Dent
David & Patricia Dettman
Ms. Susie Dickerson
Ms. Myrtle Dillon
Ms. Gay Donahue
Ms. Ramona Duncan
Ms. Stephanie Erbes
Mr. Matt Fiel
Judge Mel Flanagan
James & Judith Francois
Ms. Linda Gabriel-Kasulke
Ms. Karen Gill
Ms. Ramona Gonzalez
Ms. Ginny Gribble
Mr. Dextra Hadnot
Mr. Charles Hagner
Ms. Debra Haight
Ms. Caryn Hamilton
Mr. Jeffrey Harsch
Ms. Anne Hayes
Mr. & Mrs. Phillip Heston
Michael & Judy Howden
Ms. Luella Idom
Ms. Laurie Inman
Ms. Audrey Iwinski
Jaroth, Inc.
Ms. Sandy Jarrett
Ms. Tara Jensen
Ms. Karen Jiles
Sharon & John Jordan
Ms. Patricia Holland &
Mr. Daniel Kaemmerer
Ms. Mary Kelly
Judge Joan Kessler
Ms. Mary Klamecki
Ms. Christina Klose
Ms. Kathy Knoebel
Mr. Gerald Kopydlowski
Mrs. Maureen Kornacki
Mr. David Krueger

Ms. Stefanie Kwiatkowski
 Ms. Rose Laack
 Ms. Julie Landes
 Ms. Deborah Lapp
 Ms. Julie Litza
 Ms. Renee Lutz
 Ms. Molly McCabe
 Ms. Natasha McCants
 Ms. Alma McClendon
 Ms. Susan McGovern
 Ms. Dana McKaufman
 Ms. Tami McManus
 Dan Prowse & Kim Meinert
 Mr. Stephen Michalski
 David & Elaine Michaud
 Ms. Erma Mills
 Robert & Rebecca Moczulewski
 Ms. Pam Molina
 My Office, Inc.
 Ms. Cheryl Noordeh
 Ms. Kellie Nuhn
 Jim & Joanne O'Brien
 Mrs. Rochell Olive-Harmon
 Ms. Ingrid Olson
 Oom Yung Doe
 Mr. Patrick Otis
 Terri Pantaleo
in Honor of Therese Brachmann
 Ms. Amanda Parent
 Ms. Cheryl Poth
 Ms. Mary Qiblawi
 Dan & Dot Rasmussen
 Charles & Diane Rauls
 Ms. Rosalind Rhodes
 Ms. Lia Ruszczyński
 Ms. Nancy Schimmelpfennig
 Ms. Lois Schleif
 Ms. Christina Seidner
 Ms. Yolanda Shelbourne
 Parker & Joan Shriver
 Ms. Kathleen Shroyer

Ms. Nancy Shue
 Marilyn & Reginald Simpson
 Sisters of St. Dominic
 Ms. Lynn Slattery
 Ms. Ramona Sledge
 Ms. Jennine Sonntag
 Ms. Margaret Speed
 Ms. Pa Sponcia
 Anthony & Sue Steiner
 Mr. Roy Stollenwerk
 Mr. Fred Sucharew
 Mrs. Danyelle Sun
 Ms. Nicole Surges
 Third Sector Creative
 Ms. Michelle Thomas
 Traditional Martial Arts
 Mr. Philip Tredeau
 William & Suzanne Treichel
 Ms. Marsha Vila
 James & Dorothy Vittone
 Mr. James Wahner
 Ms. Sheila Weiss
 Ms. Mary Fran Willcoxson
 Ms. Carol Worthan
 Ms. Kim Wynn
 Ms. Stacey Yonkoski
 Ms. Debbie Zemel
 Mr. Paul Ziehler

Special thanks to our many friends who made donations under \$25 and/or contributed in-kind items to benefit those we serve.

In-Kind Donations (\$500+ value)

Association of Women Lawyers
 Bartolotta Catering & Events
 at The Grain Exchange
 Ms. Barbara Branden
 Catering by LeRoy
 Ms. Kristin Dezen
 Mr. Lindsey Draper
 Franklin Elementary School –
 3rd Graders
 GE Medical
 Harborside Villas
 Haute Taco
 High-Tech Institute
 Tom & Mary Huppertz
 Indulge Wine Rooms, LLC
 Kohl's Department Stores
 M&I Wealth Management
 MATC Culinary Arts
 Specialty Baking Class
 Maxie's Southern Comfort
 Mia Famiglia
 Midwest Airlines
 Milwaukee Bucks
 North Star American Bistro
 The Buffet at Potawatomi
 Bingo Casino
 Promolux
 Redemption Lutheran Church
 Roundy's Supermarkets, Inc.
 St. Robert Parish
 Steinhafel's
 Stone Creek Coffee
 Time Warner Cable
 The Turkey Club
 The Uncanny Soup Company
 Mr. Gary White

*Every attempt has been made to ensure the accuracy of this list. We apologize if any errors have occurred. For more information, please contact the Development Office at Community Advocates at (414) 270-2942 or the Milwaukee Women's Center at (414) 270-2956. **Thank You!***

2009 Board of Directors

Thomas Brophy, President

Medical College of Wisconsin

Shirley Sharp, Vice President

Milwaukee Urban League

Sandra Samse, Treasurer

Deloitte, LLP

Lindsey Draper, Secretary

Wisconsin Office
of Justice Assistance

Rick Bongiorno

M & I Bank

Ellen Brostrom

Reinhart Boerner Van Deuren, sc

Timothy Charek

Catholic Archdiocese of Milwaukee

Anne DeLeo

Private Attorney

Valerie Gabriel

Wisconsin Education
Association Council

Dr. Stephen Hargarten

Medical College of Wisconsin

Teddi Kennedy

Community Volunteer

Pamela Klein

Fresh Coast Partners

Leonard McGhee

Milwaukee Area Technical College

Gerald Pace

North Milwaukee State Bank

Barbara Rogers

Consumer Representative

Esther Shin

Urban Strategies

Thelma Sias

We Energies

2009 Administration and Management Staff

ADMINISTRATION

Joseph L. Volk

Chief Executive Officer

Andi Elliott

Chief Operating Officer

Sue Potts

Director, Development and
Advancement

David Riemer

Director, Community Advocates
Public Policy Institute

LaTrice Buck

Director, Milwaukee Women's Center
Division

Maudwella Kirkendoll

Director, Basic Needs Division

Jeanne Lowry

Director, Behavioral Health Services
Division

Nick Sayner

Director, Justice 2000 Division

Debra Kraft

Deputy Director & Counsel,
Public Policy Institute

Kris Uhen

Associate Director of Development

Ruthie Lombardo

Volunteer Services Manager

PROGRAM SERVICES MANAGEMENT

Madelene Amos

Milwaukee Women's Center
Shelter Manager

Racquel Bell

Brighter Futures Coordinator

Ludys Ebratt

Health Care Services Manager

Sue Eckhart

Justice 2000 Municipal Court
Alternatives Program Manager

Patti Gaffney

Payee Services Manager

Edward Gordon

Justice 2000 Pre-Trial Services
Program Manager

Doug Kay

Autumn West Manager

Ann Laatsch

Disabilities Services Manager

Kari Lerch

Continuum of Care Coordinator

Roseanne Norwood

Project Bridge Manager

Mary Ann Patti

Homeless Outreach Nursing
Clinical Manager

Jessica Shriver

Housing Services Manager

Allyson Thomas

Horizons Campus Operations
Manager

Paulette Watford

Utilities Services Manager

Carol Worthan

Clerical Services Manager

Stacey Yonkoski

Horizons Campus Clinical Manager





COMMUNITY ADVOCATES

Where Meeting Basic Needs Inspires Hope

744 North 4th Street, Suite 200
Milwaukee, WI 53203

(414) 270-2970

NONPROFIT
ORGANIZATION
U.S. POSTAGE
PAID
MILWAUKEE, WI
PERMIT NO. 4659



Learn more about Community Advocates and our services:

Community Advocates communityadvocates.net

Milwaukee Women's Center milwaukeewomenscenter.org

Public Policy Institute ca-ppi.org

Milwaukee Brighter Futures milwaukeebrighterfutures.org