

# OPENING DOORS FOR A BETTER MILWAUKEE

ADDICTION TREATMENT SUPPORT HEALING

RESPECT EMPLOYMENT ATTIRE  
COLLABORATION SAFETY

ENCOURAGEMENT HOUSING  
EMPOWERMENT GROWTH



1976 2016

COMMUNITY ADVOCATES

Where Meeting Basic Needs Inspires Hope

## 40th Anniversary

VOICE FOR THE VOICELESS

DISABILITY ADVOCACY

DIGNITY

FOUR

COMPASSION

BEHAVIORAL

DECADES

HEALTH

OF SERVICE

HOPE

UTILITY ASSISTANCE

PUBLIC POLICY CARING

# 2016 ANNUAL REPORT

## OUR MISSION

To provide individuals and families with advocacy and services that meet their basic needs so they may live in dignity.



1976 2016

COMMUNITY ADVOCATES

Where Meeting Basic Needs Inspires Hope  
40th Anniversary



MILWAUKEE WOMEN'S CENTER

Where Abuse Ends and Hope Begins

*A Division of Community Advocates*

## OUR VISION

A community in which each person envisions a future with hope.



COMMUNITY ADVOCATES

Where Meeting Basic Needs Inspires Hope

---

Public Policy Institute

To learn more about our work, please visit [communityadvocates.net](http://communityadvocates.net). *Thank You!*

# ENCOURAGEMENT

## A MESSAGE TO OUR FRIENDS

In 2016, Community Advocates commemorated its 40th year of service to individuals and families in the greater Milwaukee area. It is incredible that what started out as a one-room storefront, founded by our beloved and longtime Executive Director Ramon Wagner, has grown into a multi-site organization that reached and touched the lives of 69,284 individuals this year. For those of you who may not know, Ramon was a former priest with the Catholic Church who found his calling in wanting to help others in a more hands on and meaningful way. That calling, along with two other volunteers, led him to incorporate Community Advocates as a not-for-profit organization in 1976 whose goal was to provide basic life-sustaining services for Milwaukee's neediest individuals and their families until they could move forward on their own.

All these years later, we are honored, as are our Board of Directors, staff and volunteers, to carry the torch for Ramon to create better lives for the families and communities we serve. Community Advocates is proud of the positive impact that we have had over the last four decades because of Ramon's grit, determination, vision, and compassionate heart. We are also especially thankful for your interest, support, and investment in our mission to help people meet their basic needs so they may live in dignity. Ramon embraced treating people in a dignified and respectful way and we honor him by living those values every day.

As you read through this report, you will see firsthand the difference that Community Advocates makes on a daily, weekly, monthly, and yearly basis. On any given day, Community Advocates helps several hundred families in need of safe housing and stability, utility assistance, disability and mental health assistance, and addiction and domestic violence services.

It is because of Ramon and special friends like you that Community Advocates continues to make our community a better place to live. Thank You!

Sincerely,



Pam Klein  
President  
Board of Directors



Andi Mallmann-Elliott  
Chief Executive Officer



Pam Klein



Andi Mallmann-Elliott

# CONSOLIDATED STATEMENTS OF FINANCIAL POSITION

Years Ended December 31, 2016 and 2015

## ASSETS

	2016	2015
<b>Current assets:</b>		
Cash and cash equivalents	\$603,041	\$509,282
Investments	-	-
Receivables:		
Grants	1,900,919	1,720,060
Pledges - Current portion	478,218	218,542
Prepaid expenses and deposits	54,890	52,956
<b>Total current assets</b>	<b>3,037,068</b>	<b>2,500,840</b>
<b>Restricted assets:</b>		
Restricted cash - Client trust	137,812	128,660
<b>Total restricted assets</b>	<b>137,812</b>	<b>128,660</b>
<b>Property and equipment:</b>		
Land, buildings and improvements	9,944,826	9,944,826
Furniture and equipment	935,294	935,294
Vehicle	39,872	17,143
Total property and equipment	10,919,992	10,897,263
Less accumulated depreciation	3,617,737	3,313,679
<b>Property and equipment - Net</b>	<b>7,302,255</b>	<b>7,583,584</b>
<b>Other assets:</b>		
Pledge receivable, less current portion, net	-	-
<b>TOTAL ASSETS</b>	<b>\$10,477,135</b>	<b>\$10,213,084</b>

## LIABILITIES & NET ASSETS

	2016	2015
<b>Current liabilities:</b>		
Current portion of notes payable	\$336,422	\$325,573
Line of credit	-	100,000
Accounts payable	967,057	780,245
Accrued payroll and related liabilities	241,953	288,513
Deferred revenue	43,318	73,236
Other accrued expenses	37,629	37,087
<b>Total current liabilities</b>	<b>1,626,379</b>	<b>1,604,654</b>
<b>Client trust payable</b>	<b>141,446</b>	<b>132,294</b>
<b>Long-term liabilities:</b>		
Line of credit	-	-
Notes payable, less current portion	3,905,762	4,127,785
Total long-term liabilities	3,905,762	4,127,785
<b>Total liabilities</b>	<b>5,673,587</b>	<b>5,864,733</b>
<b>Net assets:</b>		
Unrestricted	3,937,136	3,437,150
Temporarily restricted	866,412	911,201
<b>Total net assets</b>	<b>4,803,548</b>	<b>4,348,351</b>
<b>TOTAL LIABILITIES &amp; NET ASSETS</b>	<b>\$10,477,135</b>	<b>\$10,213,084</b>

## 2016 MAJOR REVENUE SOURCES

### FEDERAL

- Department of Health & Human Services – Substance Abuse & Mental Health Services Administration
- Department of Homeland Security - Federal Emergency Management Agency
- Department of Housing & Urban Development

### STATE OF WISCONSIN

- Department of Administration - Division of Housing
- Department of Children and Families
- Department of Health Services

### MILWAUKEE COUNTY

- Department of Child Support Services
- Department of Health & Human Services - Behavioral Health Division
- Department of Health & Human Services - Disability Services Division
- Department of Health & Human Services - Housing Division
- Department of Health & Human Services - Management Services Division

### CITY OF MILWAUKEE

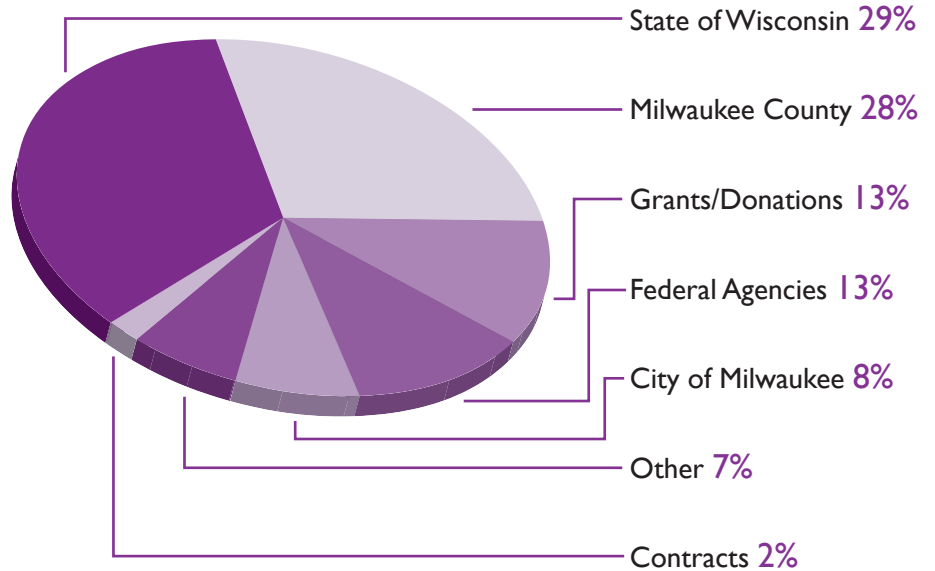
- Department of Administration - Community Development Block Grant
- Department of Administration - Emergency Solutions Grant
- Department of Administration - State of Wisconsin Emergency Solutions Grant, Transitional Housing Program & Homelessness Prevention Program
- Department of Neighborhood Services

### PUBLIC, PRIVATE, & CORPORATE CONTRACTS

- AIDS Resource Center of Wisconsin
- Children's Community Health Plan
- Kenosha Department of Human Services
- Managed Health Services
- Open Society Foundation
- Public Service Commission
- United Way of Greater Milwaukee & Waukesha County
- We Energies

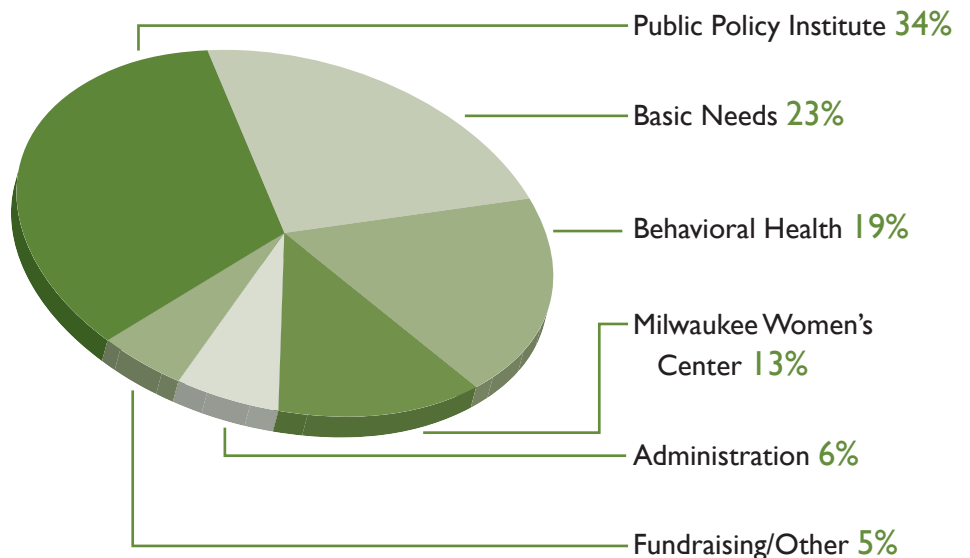
## WHERE FUNDS COME FROM

(Please See pp. 15 - 20 for additional detailed financial information.)



## WHAT FUNDS PAY FOR

(Please See pp. 15 - 20 for additional detailed financial information.)



## BASIC NEEDS

**66,925** individuals and their families received critical assistance through the Basic Needs Division in 2016.

Comprehensive **Housing Programs** provide case management, advocacy, relocation services, and financial assistance to reduce the risk of homelessness for vulnerable low-income individuals and families.

**3,220** clients were placed in permanent housing and maintained their housing for at least six months.

**12,250** families received assistance to resolve tenant/landlord issues to sustain housing.

**Utilities Programs** help low-income individuals and families avoid service interruption and disconnection.

**41,600** Energy Assistance Applications were processed, providing needed financial assistance and payment plans for these families to maintain their utilities.

**8,752** individuals completed Crisis Applications to prevent disconnection or have their utilities restored.

**35** individuals received a matching telephone assistance grant to connect and/or maintain home telephone service.

**Disability Advocacy Programs** provide SSI/SSDI application assistance to individuals with disabilities and protective payee services to individuals and families needing help managing their finances.

**958** clients received assistance with filing for SSI/SSDI benefits.

**110** individuals with disabling conditions received protective payee and financial management services.

## ELLA'S LETTER OF THANKS

*"I cannot thank Community Advocates and Maria enough. They saved my life. I lived in my home part of last winter without heat. I came to Community Advocates and prayed for a guardian angel. That angel turned out to be Maria. She sat with me and listened to my personal problems regarding what I had gone through with my soon to be ex-husband. Maria worked with me from the beginning to the end. She was so eager and willing to do all she could do to get my heat turned on and a new furnace for my home. I am truly blessed to have worked with Community Advocates and the Energy Assistance program. Thanks Maria and Community Advocates for being the resources that came to my rescue!"*

## RACHEL'S NOTE OF APPRECIATION

*"Dear Suzy,  
Just a note to express my gratitude for helping us with Energy Assistance this winter. You listened and came up with a solution. I am indebted to you and want you to know that your professional approach eased the discomfort of my requesting help. Likewise, your supervisor was kind and efficient. Keep up the good work."*



*Ramon Wagner's values greet clients in need of assistance.*



# BEHAVIORAL HEALTH SERVICES

In 2016, the Behavioral Health Services Division touched the lives of **468** individuals.

**Autumn West Safe Haven** is a low-barrier housing refuge for individuals who are chronically homeless and experiencing severe and persistent mental health challenges. This program is an alternative to emergency shelter and designed to provide safe, short-term housing along with supportive services for residents as they transition out of homelessness. Autumn West embraces Housing First and Harm Reduction principles.

Of the **58** individuals served by the Autumn West Safe Haven, **78%** were safely and stably housed by Autumn West or moved on to permanent housing by the end of the year.

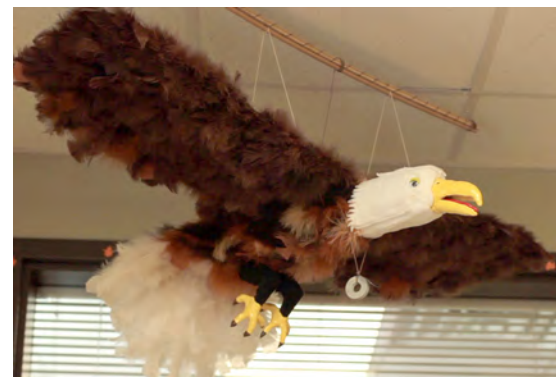
The **Homeless Outreach Nursing Center** (HONC) provides person-centered outreach and engagement to individuals with mental illness who are homeless and living on the streets, in vacant buildings, under bridges, or in parks. Clients are assessed and engaged by Nurse and Social Worker advocates and are provided services to assist them in stabilizing their mental and physical health, and homeless situations.

During 2016, HONC served **270** men and women through **1,660** engagement contacts.

HONC staff also provided case management services to **40** formerly homeless clients who are in permanent supportive housing as part of the Housing First initiative.

## **Project Bridge/Autumn West Permanent Housing Program**

Founded in 2007, this Housing First program provides immediate access to safe and affordable housing to **100** Milwaukee residents who have been identified as chronically homeless and living with a disability. The program provides case management services that employ up-to-date best practices such as Trauma-Informed Care, Motivational Interviewing and Harm Reduction to help program participants achieve housing stability. The average length of stay for residents currently in programming is 4 years and 8 months.



Former client Jesse created this beautiful eagle, which is on display in the lobby at Autumn West Safe Haven.

## MARIE'S PATH TO RECOVERY

After suffering a traumatic life event, Marie found herself in a downward spiral that left her homeless. Marie slept in community gardens and other places before meeting Kristen, a Registered Nurse with the Homeless Outreach Nursing Center. Over the course of several weeks Kristen earned Marie's trust, which resulted in Marie agreeing to go to Autumn West Safe Haven. Once there, she was so relieved to finally have clean clothes after months on the streets and she was thankful that she didn't have to worry about where her next meal was going to come from. The staff at Autumn West immediately connected her to health care, therapy, and peer support. She was diagnosed with Post-Traumatic Stress Disorder and secured new medications. While at Autumn West, Marie completed the Certified Peer Specialist training and passed the state exam. She obtained employment soon after and was so excited to be returning to the workforce to help others experiencing mental illness. Marie was also connected to Project Bridge, which provides supportive housing and case management to individuals with mental illness and/or substance use disorders. She credits the staff at Project Bridge for helping her to navigate a confusing health care system and for providing needed support to help her live independently in the community. Marie stated, "I am so grateful to all of the staff and programs that I was able to access at Community Advocates - they saved my life."

# 40<sup>TH</sup> ANNIVERSARY

COMMUNITY ADVOCATES  
RAMON WAGNER ADVOCACY CENTER



This year, Community Advocates celebrated 40 years of service to individuals and families in need in our community. Over the course of our history, we have embraced founder and longtime Executive Director Ramon Wagner's spirit of service by developing and implementing a continuum of client-centered programs and services to help our most disadvantaged neighbors meet their needs and improve their lives. As one of the largest human needs advocacy agencies in Wisconsin, our services reach and impact tens of thousands of lives each and every year. We are proud of our history and, as we look forward, we are honored to carry on Ramon's dedication and compassionate vision to help our friends in need.

Organization highlights over the last 40 years:

- In September 1976, Ramon Wagner, formerly a priest in the Catholic Church, and two volunteers opened the doors of Community Advocates in a small storefront on Milwaukee's north side with an operating budget of \$8,000. During the first year, 800 clients received assistance.
- In 1982, Community Advocates became a United Way funded agency. 4,000 clients were served.
- During 1986, Community Advocates played a key role in the development of the Energy Assurance Program, which later becomes a national model for energy assistance to low-income consumers.
- In 1990, Community Advocates had one location, 30 employees, and a budget of \$1 million.
- 1996 marks Community Advocates' 20th Anniversary. The agency's operating budget exceeds \$2 million and employs 40 full-time advocates serving 15,000 clients.
- In 2000, Community Advocates and Ramon Wagner as Project Director, are awarded a \$2.1 million contract from the State of Wisconsin's Brighter Futures Initiative for Milwaukee County.
- On April 15, 2005, Ramon Wagner passed away, leaving behind an agency with tremendous heart and a commitment to carry out his vision and passion for helping others.
- In June 2007, Community Advocates completed a merger with the Milwaukee Women's Center.
- The Public Policy Institute was created in 2008.
- Additional mergers occurred in 2009 with Horizons, 2010 with Justice 2000, and 2011 with the Bottomless Closet along with the transfer of the homeless program from the American Red Cross in 2009 and the Social Development Commission in 2010.
- In 2016, Community Advocates operated out of five service locations with three 24/7 service sites and had an annual budget of nearly \$12 million. 125 staff members delivered more than 30 programs, which address housing/homelessness, poverty, utility assistance, behavioral health, addiction, disability assistance, domestic violence, and job readiness.



*Our Lovell Street facility offers a one-stop shop of vital resources for consumers.*





On September 15, 2016, Community Advocates held its 40th Anniversary Celebration event at the Milwaukee Art Museum. Nearly 400 friends, donors, clients, and staff gathered to raise awareness and funds to benefit all of the programs and services provided by Community Advocates. The event featured a silent auction, a three-course meal, and a touching program that included remarks by former client Gary Ingram. Thelma Sias, longtime Board Member, helped to generate \$24,000 during the bid paddle call to action portion of the program. Because of the generosity and participation of our amazing Presenting, Major, and Supporting Sponsors, as well as our Table Sponsors and individual attendees, we were able to raise more than \$102,000! Thank You!

### Special Thanks to our Presenting Sponsor



### Sincere Thanks to our Major Sponsors



### Many Thanks to our Supporting Sponsors

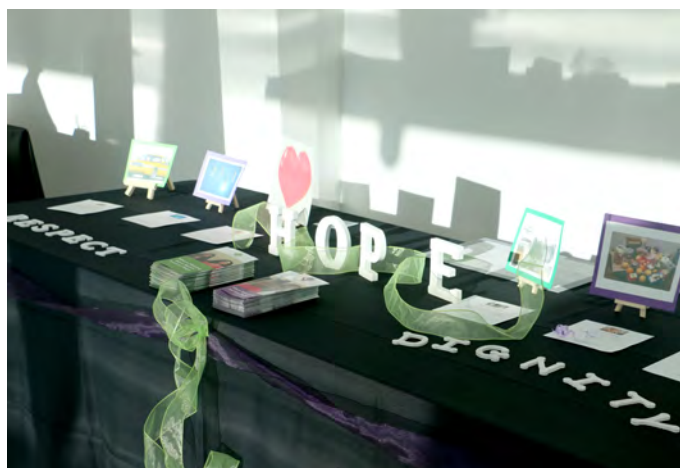
AF Technical Resources  
 MHS Health Wisconsin  
 WaterStone Bank



Former client Gary Ingram shares his personal story with our guests.



Event attendees mingle and visit prior to being seated for dinner.



Silent auction items on display at the event.

# PUBLIC POLICY INSTITUTE

The Public Policy Institute (PPI) was founded in 2008 to prevent and end the poverty that brings people through our doors at Community Advocates. PPI works to promote and implement evidence-based policies that will minimize and reduce poverty and improve the quality of life for individuals and families in Milwaukee and throughout Wisconsin by advocating for policy changes, convening coalitions, and supporting community-based programs to increase our collective impact.

One of our greatest accomplishments in 2016 was the introduction of **The Stronger Way Act** by U.S. Senator Tammy Baldwin (D-WI) and U.S. Senator Cory Booker (D-NJ). The proposed legislation is rooted in the **Working Our Way Out of Poverty** policy package that PPI has promoted as proven methods to cut poverty in half. While it was not passed as part of the 114th Congress, Senator Baldwin used the legislation to build support for the individual policies and the role that government can play in reducing poverty. She is committed to continuing the effort, and we will continue to work with all members of the Wisconsin delegation to promote these policies.

PPI continued its efforts to **protect and expand health coverage** for low-income Wisconsinites by encouraging jails across Wisconsin to implement a policy that allows individuals leaving incarceration to enroll in BadgerCare before returning to the community to ensure continued care. In many counties, we also successfully advocated for a change to the policy that terminates the BadgerCare coverage of those who are incarcerated and their families.

Building on **The Milwaukee Transitional/Subsidized Jobs Collaborative**, PPI received a new five-year \$1 million grant from the Wisconsin Partnership Program at the UW School of Medicine and Public Health to fund **Improving Health Through Expanded Work**. The pilot is working to improve the health and economic well-being of residents in some of the poorest communities in Wisconsin through subsidized employment and providing access to effective mental and physical health care.



*A Milwaukee Brighter Futures participant shared in a focus group that "Participation in this program gives youth opportunities to learn new things and make better choices."*

We were included as partners in a three-year **U.S. Department of Justice Smart Reentry Grant: Focus on Evidence-Based Strategies for Successful Reentry from Incarceration to Community Program**. Partners will help individuals returning from prison to Milwaukee with access to transitional jobs, health care, and mental health care, in an effort to reduce their probability of recidivism.

In September, PPI was a partner and played a close role in planning and designing the program for the **Resiliency in Communities After Stress and Trauma (ReCAST)** grant awarded to the City of Milwaukee's Office of Violence Prevention by the Substance Abuse and Mental Health Services Administration (SAMHSA). The grant will advance the city's efforts to promote resilience and equity in communities that have recently faced civil unrest.

We are grateful to have been awarded the state's most recent **Milwaukee Brighter Futures Initiative (MBFI)** contract, which runs through 2018, enabling us to continue to serve as administrator of the state's youth development and prevention funding in Milwaukee, a role we have filled for over 10 years. As MBFI administrator, PPI convened MBFI grantees throughout the year to foster collaboration and provide technical assistance to improve program outcomes.



COMMUNITY ADVOCATES  
Where Meeting Basic Needs Inspires Hope  
Public Policy Institute

PPI is the home of the **Milwaukee County Substance Abuse Prevention Coalition (MCSAP)**, a county-wide initiative with a focus on preventing youth marijuana use and prescription drug overdose. In 2016, **The Marijuana Prevention Subcommittee** expanded the opportunity for youth to develop messaging through its youth-driven “Marijuana Prevention Social Norms and Marketing Campaign.” As part of the **Prescription Drug Overdose Prevention Subcommittee**, volunteers delivered postcards to more than 150 pharmacies throughout Milwaukee County to spread the word about safe drop box locations. The subcommittee also solidified a partnership between MCSAP and Marquette University Sports to bring awareness to the dangers of prescription painkiller misuse.

PPI administers the southeast Wisconsin region of the **Alliance for Wisconsin Youth (AWY)**, an alliance committed to supporting substance use disorder prevention coalitions. A new **Partnerships for Success (PFS)** grant provided technical assistance to substance use prevention coalitions in the two southeast Wisconsin counties hardest hit by the opioid epidemic.

As a part of our **Drug-Free Communities (DFC)** work in the 53206 zip code, nearly 300 students at Auer Avenue Community School took the “A Drug-Free Me” Pledge and made commitments to live a drug-free life and spread the message to their peers and community. DFC also sponsored COA Goldin Youth & Family Center’s Above the Influence poster contest, where more than 20 middle school students created posters envisioning “A Drug-Free 53206 for Me.”

In November, the City of Milwaukee Common Council voted to prohibit smokeless tobacco in all sporting venues in the city following Alderman Michael Murphy’s education through the **City of Milwaukee Tobacco-Free Alliance** and its partners on the Knock Tobacco Out of the Park campaign! The PPI-housed Alliance also conducted over 500 tobacco compliance checks with assistance from youth and the Milwaukee Police Department to ensure tobacco is not sold to youth under 18, educated 100 retailers on the state statutes related to tobacco sales, and promoted smoke-free housing with 200 area landlords with the City of Milwaukee Department of Neighborhood Services. Environmental scans were also conducted in 40 retail shops in order to track differences in marketing and product placement between neighborhoods as part of a county-wide research project.



Community Advocates was proud to host several community leaders at the introduction of The Stronger Way Act. At that event, the legislation was praised by Brian Osei, a successful Transitional Jobs participant.



MCSAP Coordinator, Kasaundra Brown staffed a prevention table at a Marquette basketball game to highlight the dangers of prescription drug misuse.



# MILWAUKEE WOMEN'S CENTER



MILWAUKEE WOMEN'S CENTER

Where Abuse Ends and Hope Begins

A Division of Community Advocates

A total of **1,891** individuals received services and support through the Milwaukee Women's Center Division in 2016.

**122** women and **92** children were safely housed and received comprehensive domestic violence services through the **Emergency Shelter**.

**173** low-income, homeless women and **290** children received shelter and assistance through the **Family Support Center**.

**95** women age 50 and older who were abused at the hands of their long-time partners or adult sons or daughters received assistance through the **Older Abused Women's Program**. **96%** of program participants prepared a safety plan.

Of the **193** men who began batterers' prevention and intervention education, **68%** completed the six-month **Nevermore Program** to help them change abusive and controlling behaviors in their intimate partner relationships.

**105** men learned how to become better dads and role models through their participation in the **Fatherhood Program**. **73%** successfully completed the program.

**51** women received intensive substance treatment through the **POWER Program** to overcome alcohol and other drug abuse issues. **10** families (30 participants) engaged in POWER's Celebrating Families, which included supervised visitation to aid women in the process of reunification with their children.

**59** men and women received outpatient substance abuse treatment through the **Family Intervention Program**, which provides treatment and support to African American and Latino families.

**The Bottomless Closet** provided free clothing and job readiness assistance to **442** women and **269** men who were entering or re-entering the workforce.

## AMARAH'S STORY

*Amarah, a 29 year-old single mother of two young daughters, entered Emergency Shelter in March 2016 due to homelessness. She had been employed but lost her job due to domestic violence issues with the children's father and she became unable to sustain her housing. Amarah was determined to better her family's situation. She actively engaged in all support groups to address domestic violence, substance use, and positive parenting/family nurturing. Working closely with a Case Manager, she received information, referrals, and ongoing support to access benefits, seek employment, and secure housing. Amarah and her Case Manager, completed applications for transitional living programs as well as contacting private landlords. During her two-month shelter stay, Amarah was approved for W-2 benefits, an Emergency Assistance grant, and the Hope House Safe Landing Program. The Case Manager also helped her to create an affordable budget and referred her to Community Advocates' Utilities Program to avoid any interruption of utilities. Amarah secured full time employment and successfully transitioned from Shelter into permanent housing. She is very grateful for the support, resources and encouragement she received during her stay and looks forward to raising her daughters in a safe and happy home.*



Stephanie Morris,  
Older Abused Women's Program  
Outreach & Community Case Manager



# SAFETY

# 2016 HONOR ROLL OF DONORS

## \$100,000 and above

William and Karen Krueger Trust  
United Way of Greater Milwaukee &  
Waukesha County

## \$10,000 to \$99,999

Mr. Chris Abele  
Anonymous  
Brico Fund  
Mark & Janice Franzen  
Bryan & Rebecca House  
Bob & Pam Klein  
The Magic Pebble Foundation  
Charles R. O'Malley Charitable Lead Trust  
Jane Bradley Pettit Foundation  
Francie Luke Silverman Foundation  
We Energies Foundation  
WGirls Milwaukee

## \$5,000 to \$9,999

Anonymous  
Mr. John Bohler  
Direct Supply Foundation  
Jomela Properties  
Ladish Co. Foundation  
Riverwest Fem Fest  
Roundy's Foundation  
Sensient Technologies Foundation  
The TJX Foundation  
Town Bank, A Wintrust Community Bank  
WaterStone Bank

## \$2,500 to \$4,999

AF Technical Resources  
Alpha Chi Omega, Theta Omega Chapter  
The Benevity Comm. Impact Fund  
CT Charitable Fund  
Jenny & Bob Hillis  
John T. & Suzanne S. Jacobus Family Fdn.  
Gustav & Gladys Kindt Foundation  
MHS Health Wisconsin  
Wines for Humanity

## \$1,000 to \$2,499

Anonymous  
Aurora Health Care  
Boys & Girls Clubs of Greater Milwaukee  
Richard & Nancy Brophy  
Thomas & Suzanne Brophy  
Center for Self-Sufficiency  
Thomas & Mary Belle Chatton  
Children's Hospital of Wisconsin  
Diversified Insurance Solutions  
Mr. Stephen Elliott  
Employ Milwaukee  
Mr. & Mrs. Thomas W. Florsheim Sr.  
Froedtert & the Medical College of Wisconsin  
Ms. Valerie J. Gabriel  
Greater Milwaukee Foundation  
F. Thomas Ament Fund  
Colton Charitable Fund  
Lawlis Family Fund  
John & Elizabeth Hoylman  
Interstate Parking Company LLC  
Mr. Maudwella Kirkendoll  
William & Sarah Koch  
Legal Aid Society of Milwaukee  
Jan & Vince Martin  
Medical College of Wisconsin, Dept. of  
Emergency Medicine  
Ms. Susan L. Nemetz  
PKWARE, Inc.  
Park Bank Foundation, Inc.  
Pieper Electric, Inc./Ideal Mechanical  
Mr. Mark Rosnow  
Sandy & Mark Samse  
Shorewest Realtors  
Mr. & Mrs. Thomas G. Smith  
Trilogy Health Insurance  
Uwe Koch & Kris Uhen  
United Community Center  
VJS Construction Services  
Waukesha County Community Foundation  
WaterStone Bank Fund  
We Energies  
Max & Aimee Welsh  
Wipfli LLP  
Jodi L. Wire  
YWCA Southeast Wisconsin

## \$500 to \$999

Mr. Christopher Andrews  
Anonymous (2)  
Mr. Thomas Bare  
Rob & Danette Buikema  
Ms. Marlene Burdick  
Mr. Fred Burg  
Al & Sue Burgemeister  
Jeff & Sandi Chang  
Combined Federal Campaign of SEWI  
ComNet Incorporated  
Patrick T. Curley & Anne L. DeLeo  
Randy & Colleen Endsley  
ExxonMobil Foundation  
GFWC-WI Lakeshore District  
Thomas & Sharon Hammeke  
Ms. Deborah Heffner  
Mr. Nate Imfeld  
Ms. Laurel Jahn  
David & Lynne Jorgensen  
Ms. Cheryl Kaminski  
Ms. Amy Kaster  
Mr. Ted Kellner  
Ms. Margaret Knitter  
Mr. Kevin Krogmann  
Mr. Peter Layde  
Jim & Sue Lecher  
Ms. Kari Lerch  
Ms. Ann M. Maguire  
Milwaukee Steppers & Ballroomers United  
Mr. Michael Mueller  
Paloucek Family Fund  
Ms. Mandy B. Ramlow  
Ellie Graan & David Riemer  
Kelley & David Ruzicka  
Schueller/Harrington & Assoc.  
Ms. Margaret Schulz  
James Verbsky & Esther Shin  
Summit Credit Union  
Truist  
Two Men & A Truck  
UMOS Inc.  
Mr. David Venancio  
Anu Vijayakumar

Special thanks to our dedicated volunteers!  
During 2016, **578** volunteers donated a total  
of **4,216** hours valued at **\$91,824!**



**\$250 to \$499**

Anick & Associates  
 Associated Bank  
 Ms. Danielle Bly  
 Ms. Sheree Dallas Branch  
 Timothy & Margaret Charek  
 Mr. Jason Coterel  
 Ms. Cathy Duszynski  
 Evolution Retirement Services, Inc.  
 Mr. Andrew Falk  
 GE United Way Campaign  
 Heiner & Barbara Giese  
 Ms. Sheronda Grant  
 Ms. Marilynne J. Baer Hahn  
 Ms. Rebecca Hobart  
 Charles Kahn & Patti Keating Kahn  
 Ms. Jill Kleinschmidt  
 Herb Kohl Philanthropies  
 Local 4603 Comm. Workers of America  
 Ms. Lois Malawsky  
 Paul & Elise Meyer  
 P3 Development Group LLC  
 Ms. Mary Ann Patti  
 Kevin & Sharon Peters  
 Dr. Alicia Pilarski-Haller  
 Pride Fest  
 Ms. Anna Retzke  
 Mr. Paul Schmitz  
 Stephen Adams & Thelma Sias  
 Ms. Patricia Swanson  
 Ms. Judith A. Beeckler Tod  
 Sandra & Ron Tunis  
 United Milwaukee Scrap &  
 Schulz's Recycling Inc.  
 Mr. & Mrs. Richard Vander Heiden  
 Ms. Kate Venne  
 Mr. Carl Wesley, Jr.  
 Mr. John A. Zaganczyk

**\$100 to \$249**

Seymour & Shirley Abrahamson  
 Allied Health Club, Bryant & Stratton College  
 Alpha Chi Omega, Theta Omega Chapter  
 Mr. David Anstaett  
 Ms. Lisa Bahr  
 Ms. Suzanne Baierl  
 Ms. Sue Baker  
 Michael Bare & Tristan Breedlove  
 Ms. Martha L. Barry  
 Ms. Barbara Beckert  
 Ms. Pamela Bell  
 Ms. Susan Bennett  
 Mr. Daniel Brenton  
 Ms. Katherine C. Briggs  
 Ms. Christy Brooks  
 Tom & Joanne Brown  
 Ms. Jan Buchler  
 Mr. Robert Burkham  
 Ms. Shawanna Campbell  
 Ms. Mary Catena  
 Joseph & Katherine Cayen  
 Mr. Robert Cherry  
 Mr. Michael Coleman  
 Adrienne Cooper  
 Mr. Joseph Crumrine  
 Mr. Brian J. Cummings  
 Tom & Denise Curtis  
 Ms. Marie D'Amico  
 Mr. Thomas Dahl  
 Ms. Jennifer Dahms  
 Mr. Robert Dennik  
 Ms. Virginia Duiven  
 Ms. Phyllis Eckles  
 Jane & Randel Edwards  
 Mr. Timothy Edwards  
 Ms. Mary Finger  
 Ms. Colleen Foley  
 Sarah Ford & Randall Klumb  
 Ms. Patti Gaffney  
 Phillip & Katherine Gaffney

Mr. Joel Gaughan  
 Ms. Katherine Gehl  
 Mr. Anthonie Goedheer  
 Maribeth & Jim Gosz  
 Greater Milwaukee Association of  
 Legal Professionals  
 Vivian & Michael Guzniczak  
 Sue & Dan Haislmaier  
 John & Kathleen Hanneman  
 Ms. Stella Hardy  
 Dr. Stephen Hargarten & Ms. Janis Cohn  
 Henry Schein Dental  
 Kim & Eileen Hession  
 Ms. Stephanie Hicks  
 Ms. Debra Jacob  
 Ms. Angela Jansen  
 Ms. Grace Janusz  
 Mr. Theodore & Mrs. Mary John  
 Mr. Mario D. Johnson  
 Ms. Tracy Johnson  
 Ms. April Johnson-Howell  
 Ms. Sharon Jordan  
 Veronica & Matt Junker  
 Ms. Darlene Kadlec  
 Ms. Kate Kaiser  
 Mr. Russ Kania  
 Ms. Julie Kerksick  
 Ms. Renee Kirnberger  
 Maureen & Ronald Kornacki  
 Ms. Kim Kramer  
 Ms. Laura Kwaterski  
 Ms. Anne LaDisa  
 Mr. Jerome Lewin  
 Mr. Jim Liedtke  
 David & Mary Ann Lillich  
 Ms. Renee Lutz  
 Ms. Margaret Mahlberg  
 Ms. Sandra Mallmann  
 Marquette University  
 Mr. Everett Marshburn  
 Mr. Paul Mascari  
 Rick & Cindy Mattson  
 Mr. Daniel J. McCarthy  
 Ms. Amy Meyer  
 David & Elaine Michaud  
 Gayle & Mike Miles  
 Milwaukee Community Journal  
 Ms. Susan Mischler  
 Ms. Linda Moore  
 Ms. Sheila A. Moore  
 Mr. John Murtaugh  
 Ms. Katie Nadler  
 Neu-Life Community Development  
 Oak Creek Automotive  
 Mr. Richard O'Conor  
 Gust Olson, III  
 Ms. Ingrid Olson  
 Ms. Heather Paradis  
 Ms. Emily Pease  
 Ms. Paula Penebaker



*Thank you WGIRLS Milwaukee for your generous donation!*

Ms. Terry Perry  
 Mark A. Peters  
 Randy & Janet Peterson  
 Ms. Kayla Pierce  
 Mr. James Pospychalla  
 Ms. Cheryl Poth  
 Ms. Anne F. Purzell  
 Ms. Patricia R. Ranz  
 Mr. Matt Raymond  
 Ms. Kathryn Reimer  
 Mr. Jon Richards  
 Ms. Jessica Jimenez Rico  
 Mrs. Anna T. Riordan  
 Patience & George Roggensack  
 Mr. Jeffery K. Roman  
 Mr. Jeffrey Rose  
 Nathaniel & Amy Schlotthauer  
 Ms. Ginny Schneider  
 Mr. William Schneider  
 James W. Schumacher  
 Sisters of the Divine Savior  
 Skin Evolved  
 Ms. Lisa Southern  
 William & Kathleen Staudenmaier Jr.  
 Mr. Eric D. Steele  
 Jerry & Linda Stapaniak  
 Ms. Karen Stiles  
 Mr. Steve Thomas  
 Ms. Patricia Thompson  
 Mr. Ryan Tichy  
 Ms. Amy Turim  
 Ms. Joan Uselmann  
 Ms. Catherine Washabaugh  
 Mr. John Washbush  
 Ms. Amy Watson  
 Elissa & Charles Weber  
 Mr. David Welch  
 Ms. Laurie Wilhelm  
 Mr. Conor Williams

**\$50 to \$99**

Alfred & Jacquelyn Anderson  
 Ms. Jody Baxter  
 Erin Becker  
 Ms. Joan Bedinghaus  
 Mr. Tim Brown  
 Ms. Rashidah Butler  
 Ms. Laura Chase  
 Luann & Norman Cummings  
 Ms. Myrtle Dillon  
 Ms. Christina Disterhaft  
 Ms. Sue Eckhart  
 Ms. Hannah Eckl  
 Mr. Paul Edwards  
 Ms. Penny Edwards  
 Mr. Randel Edwards  
 Ms. Sheryl Egan  
 Mr. Gordon R. Eisendrath  
 Steve & Helene Gyarmaty  
 Tracy Hamley  
 Erin Hareng  
 Ms. Joann Harris-Comodore  
 Ms. Taylor Heinselman  
 Ms. Judith K. Hestoft  
 E. Alexander Hill  
 Ms. Genevieve E. Hillis  
 Ms. Cordella Jones  
 Mrs. Marjorie Jothan  
 Ms. Karen Kartheiser  
 Dartanyan Kirkendoll  
 Ms. Julie Kuehl  
 Mr. Adam Lester  
 Greg & Jenell Loreck  
 Clem & Joyce Maslowski  
 Mr. Michael McGoldrick  
 Mr. Ed Miller  
 Miller-Coors National Processing Account  
 Chuck & Pat Millmann  
 Ms. Jenann Olsen  
 Ms. Leslie Paulson  
 Ms. Sara Perry  
 Ms. Renee Peterson  
 RBC Wealth Management  
 Megan & Erik Ramirez  
 Ms. Doreen M. Rockette  
 St. Sebastian Catholic Church  
 Ms. Sandra Schnell  
 Mr. Paul Seifert  
 John & Stacey Sibilski  
 Ms. Jennifer L. Simpson  
 Ms. Cassandra Smith  
 Ms. Rose E. Spang  
 Mr. Eric Struve  
 Mr. James Thomas  
 Truist  
 Joseph & Karen Tubbs  
 Ms. Marta Turba  
 US Bank Foundation  
 Ms. Marsha Vila  
 Ms. Joann Wagner

Ms. Erika Wagner-Martin  
 Ahong Xiong  
 Len & Lynne Zacharias

**\$25 to \$49**

Ms. Nicole Adams  
 Ms. Carmen Banks  
 Mr. Dirk Carson  
 Mr. Louis Chavez  
 Ms. Sharon Clausz  
 Ms. Lucy C. Cooper  
 Ms. Jennifer Cords  
 David & Patricia Dettman  
 Lt. Karen Dubis  
 David & Malinda Eskra  
 Ms. Tiffany Frazer  
 Ms. Cindy Gear  
 Jessie Giles  
 Mary & Marty Golden  
 Mrs. Alicia Gray-McGhee  
 Katie & Thomas Heinen  
 Ms. Holly Kaster  
 Lakeshore Veterinary Specialists LLC  
 Ms. Kawana Lee  
 Ms. Susan Lloyd  
 Ms. Chelsea McDougall  
 Mr. Andrew McLean  
 Ms. Stormy Mercadel  
 Ms. Kate Mott  
 Geri Naymick  
 Ms. Barbara Nehrbass  
 Ms. Mary Neubauer  
 Mr. Bradley Osborn  
 Ms. Theresa Reagan  
 Ms. Rosalind Rhodes  
 Ms. Christine Roberts  
 S & C Electric Company National Account  
 Mr. William Scallon  
 Ms. Lynn Schiller  
 Bruce & Shirley Schimel  
 Ms. Nancy Schimmelpfennig  
 Ms. Carolyn Spongberg  
 Sue Martin-Steiner & Anthony Steiner  
 Mr. Bill Uhen  
 Ms. MaryAnn Valencia  
 James & Dorothy Vittone  
 Ms. Charlene Weidert  
 Ms. Nancy Wieland  
 Ms. Carolyn Wood

Every attempt has been made  
 to ensure the accuracy  
 of this list.

We apologize if any errors  
 have occurred.

Questions can be directed to  
 Kris Uhen at  
[kuhen@communityadvocates.net](mailto:kuhen@communityadvocates.net)  
 or by calling  
 (414) 405-6054.

*Thank You!*

Thank you to our valued friends who  
 made donations up to \$25 or who made  
 generous in-kind donations to support  
 our programs and consumers!

# Community Advocates, Inc.

## Schedule of Revenue and Expense by Program

Year Ended December 31, 2016

	Administration	Leased Space	Fundraising	Public Policy	Public Policy	Public Policy	Public Policy	Public Policy	Public Policy	Public Policy
Revenue:										
Contributions	\$ -	\$ -	\$ 510,241	\$ -	\$ -	\$ -	\$ 3,000	\$ -	\$ -	\$ -
United Way	-	-	27,431	-	-	-	-	-	-	-
Foundation grants	-	-	-	-	-	-	15,000	-	-	-
Federal grants	-	-	-	-	-	-	-	-	-	-
State of Wisconsin grants	-	-	-	152,828	52,193	87,355	-	-	-	-
Milwaukee County grants	-	-	-	-	-	-	-	500,000	92,648	263,708
City of Milwaukee grants	-	-	-	-	-	-	-	-	-	-
Other grants and revenue	-	-	-	-	-	-	-	-	-	-
Interest income	-	-	1,217	-	-	-	-	-	-	-
Miscellaneous revenue	2,907	459,761	1,766	-	-	-	65,739	500	-	-
Releases from restriction	-	-	-	-	230	-	165,803	-	-	-
<b>Total revenue</b>	<b>2,907</b>	<b>459,761</b>	<b>540,655</b>	<b>152,828</b>	<b>52,423</b>	<b>87,355</b>	<b>249,542</b>	<b>500,500</b>	<b>92,648</b>	<b>263,708</b>
Expenses:										
Salaries	374,191	-	75,562	70,522	4,872	3,572	170,374	101,423	45,460	3,829
Employee benefits	69,878	-	7,486	9,232	488	744	24,018	15,145	9,890	481
Professional fees	163,916	-	8,842	32,206	22,434	17,800	600	55,818	12,333	15,000
Supplies	5,238	323	1,446	2,984	666	13	1,279	2,600	2,878	620
Telephone	8,383	4,596	537	1,295	66	29	2,582	2,230	594	-
Postage and shipping	856	9	2,144	28	-	-	4	44	5	2
Occupancy	30,597	253,093	387	3,819	177	152	7,678	6,561	1,140	-
Furniture and equipment	13,946	8,316	795	1,724	75	45	3,220	2,652	992	-
Depreciation and amortization	6,614	96,097	-	1,146	60	49	2,363	1,969	322	-
Printing and subscriptions	1,739	-	8,048	104	-	-	348	2,265	245	-
Travel	2,851	-	-	4,490	985	2,716	7,236	8,291	4,102	59
Conferences and training	7,504	-	25,724	9,969	15,276	5,121	713	7,205	4,812	-
Client assistance	-	-	-	-	-	-	-	-	-	-
Professional dues	17,728	-	2,550	500	-	-	-	220	-	-
Miscellaneous expense	9,842	-	3,802	-	-	-	-	-	550	-
Interest expense	-	-	-	-	-	-	-	-	-	-
Subcontract	-	-	-	2,000	6,400	56,510	-	275,926	-	243,028
Administration	(710,376)	-	13,439	12,809	958	604	29,127	18,151	9,325	689
<b>Total expenses</b>	<b>2,907</b>	<b>362,434</b>	<b>150,762</b>	<b>152,828</b>	<b>52,457</b>	<b>87,355</b>	<b>249,542</b>	<b>500,500</b>	<b>92,648</b>	<b>263,708</b>

# Community Advocates, Inc.

## Schedule of Revenue and Expense by Program (Cont.)

Year Ended December 31, 2016

	Public Policy	Public Policy	Public Policy	Public Policy	Public Policy	Disability - County	Disability	Disability - County	Family Support Center	Family Support Center
Revenue:										
Contributions	\$ -	\$ -	\$ -	\$ -	\$ -	\$ -	\$ -	\$ -	\$ -	\$ -
United Way	-	-	-	-	-	-	-	-	71,840	-
Foundation grants	-	-	-	-	-	-	-	-	3,590	-
Federal grants	131,312	-	-	-	-	-	-	-	-	-
State of Wisconsin grants	-	-	49,861	-	17,910	-	-	-	-	-
Milwaukee County grants	-	-	-	46,268	-	45,000	-	46,120	-	-
City of Milwaukee grants	-	-	-	-	-	-	-	-	-	83,725
Other grants and revenue	-	100,905	-	-	-	-	51,440	-	-	-
Interest income	-	-	-	-	-	-	-	-	-	-
Miscellaneous revenue	-	-	-	-	-	-	-	-	1,532	-
Releases from restriction	-	4,302	-	-	-	-	-	-	114,275	-
<b>Total revenue</b>	<b>131,312</b>	<b>105,207</b>	<b>49,861</b>	<b>46,268</b>	<b>17,910</b>	<b>45,000</b>	<b>51,440</b>	<b>46,120</b>	<b>191,237</b>	<b>83,725</b>
Expenses:										
Salaries	53,863	10,892	25,064	4,133	9,856	28,354	33,793	35,802	118,859	-
Employee benefits	8,886	2,441	3,713	816	1,292	5,900	9,252	3,541	17,005	-
Professional fees	24,381	-	14,152	-	1,000	-	-	-	945	-
Supplies	5,208	30	106	8	8	332	255	49	4,566	18,385
Telephone	1,143	166	207	17	89	1,021	1,021	269	-	-
Postage and shipping	-	-	-	-	-	905	435	-	299	-
Occupancy	2,292	468	1,025	188	311	2,142	2,142	193	20,239	55,959
Furniture and equipment	1,608	188	355	34	155	1,371	1,371	398	75	8,995
Depreciation and amortization	627	151	304	37	87	576	576	-	8,012	-
Printing and subscriptions	-	-	-	-	-	-	-	-	371	302
Travel	19,821	198	1,013	1,893	1,685	-	217	-	1,295	-
Conferences and training	4,515	29	-	550	2,570	-	-	-	(84)	84
Client assistance	-	-	-	-	-	-	-	-	-	-
Professional dues	-	-	-	-	-	-	-	-	-	-
Miscellaneous expense	-	-	-	-	-	-	-	-	-	-
Interest expense	-	-	-	-	-	-	-	-	-	-
Subcontract	-	88,434	-	38,000	-	-	-	-	-	-
Administration	8,968	2,210	3,922	592	857	5,144	5,930	6,199	19,655	-
<b>Total expenses</b>	<b>131,312</b>	<b>105,207</b>	<b>49,861</b>	<b>46,268</b>	<b>17,910</b>	<b>45,745</b>	<b>54,992</b>	<b>46,451</b>	<b>191,237</b>	<b>83,725</b>

# Community Advocates, Inc.

## Schedule of Revenue and Expense by Program (Cont.)

Year Ended December 31, 2016

	Family Support Center	Family Support Center	Family Support Center	Family Support Center	Housing	Housing	Housing	Housing	Housing	Housing	Housing
Revenue:											
Contributions	\$ -	\$ -	\$ -	\$ -	\$ -	\$ -	\$ -	\$ -	\$ -	\$ -	\$ -
United Way	-	-	-	5,582	36,266	-	-	-	-	-	-
Foundation grants	-	-	-	-	-	-	-	-	-	-	-
Federal grants	-	-	-	-	-	-	-	-	-	-	-
State of Wisconsin grants	-	-	-	81,000	-	-	-	-	-	-	-
Milwaukee County grants	-	-	79,378	-	6,724	-	-	-	-	-	-
City of Milwaukee grants	88,943	52,641	-	-	-	14,559	116,338	37,908	16,065	115,354	119,994
Other grants and revenue	-	-	-	-	-	-	-	-	-	-	-
Interest income	-	-	-	-	-	-	-	-	-	-	-
Miscellaneous revenue	-	-	-	-	30	-	-	-	-	-	-
Releases from restriction	-	-	-	-	38,382	-	-	-	-	-	-
<b>Total revenue</b>	<b>88,943</b>	<b>52,641</b>	<b>79,378</b>	<b>86,582</b>	<b>81,402</b>	<b>14,559</b>	<b>116,338</b>	<b>37,908</b>	<b>16,065</b>	<b>115,354</b>	<b>119,994</b>
Expenses:											
Salaries	63,885	38,893	21,802	31,899	11,318	-	6,832	-	11,358	81,976	83,682
Employee benefits	11,811	6,742	2,330	9,333	16,964	-	493	-	2,549	17,406	14,945
Professional fees	-	-	-	-	-	-	-	-	-	-	-
Supplies	-	-	11,196	-	4,914	-	-	-	-	-	-
Telephone	-	-	7,289	-	7,663	-	-	-	-	-	363
Postage and shipping	-	-	46	-	822	-	-	-	-	-	-
Occupancy	-	-	19,747	20,977	25,621	-	-	-	-	-	3,864
Furniture and equipment	-	-	2,887	-	10,575	-	-	-	-	-	395
Depreciation and amortization	-	-	-	18,792	5,553	-	-	-	-	-	-
Printing and subscriptions	-	-	-	-	564	-	-	-	-	-	-
Travel	-	-	7,481	-	4,667	-	-	-	-	-	1,761
Conferences and training	-	-	-	-	-	-	-	-	-	-	-
Client assistance	-	-	2,785	-	7,737	14,559	107,399	37,908	-	-	-
Professional dues	-	-	-	-	-	-	-	-	-	-	-
Miscellaneous expense	-	-	-	-	-	-	-	-	-	-	-
Interest expense	-	-	-	-	-	-	-	-	-	-	-
Subcontract	-	-	-	-	-	-	-	-	-	-	-
Administration	13,247	7,006	3,815	5,581	(1,092)	-	1,412	-	2,158	15,972	14,984
<b>Total expenses</b>	<b>88,943</b>	<b>52,641</b>	<b>79,378</b>	<b>86,582</b>	<b>95,306</b>	<b>14,559</b>	<b>116,136</b>	<b>37,908</b>	<b>16,065</b>	<b>115,354</b>	<b>119,994</b>



# Community Advocates, Inc.

## Schedule of Revenue and Expense by Program (Cont.)

Year Ended December 31, 2016

	Housing	Housing	Utility	Case Management	Case Management	Case Management	Other	Brighter Futures	Fatherhood	Women's Center Shelter	Women's Center Shelter
Revenue:											
Contributions	\$ -	\$ -	\$ -	\$ 5,000	\$ -	\$ -	\$ 13,990	\$ -	\$ -	\$ 1,300	\$ -
United Way	-	-	-	-	-	-	-	-	-	30,811	-
Foundation grants	-	-	-	15,000	-	-	-	-	-	-	-
Federal grants	-	-	-	1,094,373	-	-	-	-	-	-	-
State of Wisconsin grants	-	-	-	-	-	-	-	2,541,267	-	-	100,000
Milwaukee County grants	-	-	1,963,085	-	-	-	-	-	90,190	-	-
City of Milwaukee grants	-	82,379	-	-	12,102	41,495	-	-	-	-	-
Other grants and revenue	-	-	9,104	-	-	-	-	-	-	-	-
Interest income	-	-	-	-	-	-	-	-	-	-	-
Miscellaneous revenue	-	-	-	172,986	-	-	44,030	5,002	-	155	-
Releases from restriction	199,160	-	123,407	-	-	-	-	-	-	30,816	-
<b>Total revenue</b>	<b>199,160</b>	<b>82,379</b>	<b>2,095,596</b>	<b>1,287,359</b>	<b>12,102</b>	<b>41,495</b>	<b>58,020</b>	<b>2,546,269</b>	<b>90,190</b>	<b>63,082</b>	<b>100,000</b>
Expenses:											
Salaries	51,329	62,590	1,307,093	286,704	9,845	27,395	71,206	101,338	34,170	-	57,802
Employee benefits	14,310	8,813	202,349	43,518	2,257	7,228	10,348	16,589	3,758	-	14,696
Professional fees	-	-	4,787	6,418	-	-	350	279,205	27,640	63,220	-
Supplies	862	-	70,234	9,453	-	-	11,490	10,242	9,918	1,000	570
Telephone	786	-	23,888	4,008	-	-	325	2,896	795	401	2,142
Postage and shipping	124	-	15,953	596	-	-	-	63	6	6	-
Occupancy	4,658	-	174,631	20,355	-	-	(48,816)	8,556	3,079	-	10,891
Furniture and equipment	1,120	-	44,215	6,494	-	-	-	2,539	2,010	-	1,219
Depreciation and amortization	718	-	31,431	6,206	-	-	-	2,419	843	-	2,244
Printing and subscriptions	71	-	-	-	-	-	-	-	-	-	-
Travel	677	-	2,968	18,583	-	-	1,170	10,674	-	-	178
Conferences and training	650	-	2,787	528	-	-	3,200	11,685	-	-	-
Client assistance	115,048	-	2,582	848,177	-	-	-	-	120	-	-
Professional dues	-	-	700	-	-	-	15,998	-	-	-	-
Miscellaneous expense	-	-	-	-	-	-	4,925	-	-	-	-
Interest expense	-	-	-	-	-	-	54,302	-	-	-	-
Subcontract	-	-	-	-	-	-	-	2,081,026	-	-	-
Administration	8,807	10,976	211,978	52,101	-	6,872	-	19,037	6,470	-	10,537
<b>Total expenses</b>	<b>199,160</b>	<b>82,379</b>	<b>2,095,596</b>	<b>1,303,141</b>	<b>12,102</b>	<b>41,495</b>	<b>124,498</b>	<b>2,546,269</b>	<b>88,809</b>	<b>64,627</b>	<b>100,279</b>

# Community Advocates, Inc.

## Schedule of Revenue and Expense by Program (Cont.)

Year Ended December 31, 2016

	Women's Center Shelter	Women's Center Shelter	DV Shelter	DV Shelter	DV Shelter	DV Shelter	DV Shelter	DV Shelter	DV Shelter	DV Shelter	DV Shelter	DV Shelter	Autumn West	HONC
Revenue:														
Contributions	\$ -	\$ -	\$ -	\$ -	\$ -	\$ -	\$ -	\$ -	\$ -	\$ -	\$ -	\$ -	\$ -	\$ -
United Way	-	-	-	7,329	8,126	-	-	-	-	-	-	5,363	36,927	-
Foundation grants	-	-	-	-	-	-	-	-	-	-	-	-	-	-
Federal grants	-	-	-	-	-	-	-	-	-	-	-	-	-	-
State of Wisconsin grants	372,261	-	-	26,101	40,669	-	-	-	-	138,243	25,000	-	-	-
Milwaukee County grants	-	-	-	-	-	26,777	-	-	-	-	-	-	-	-
City of Milwaukee grants	-	-	-	-	-	-	22,500	48,226	95,637	-	-	-	-	-
Other grants and revenue	-	155,435	-	-	-	-	-	-	-	-	-	-	-	-
Interest income	-	-	-	-	-	-	-	-	-	-	-	-	-	-
Miscellaneous revenue	-	-	-	-	-	-	-	-	-	-	-	-	3,040	-
Releases from restriction	-	-	23,939	-	20,409	-	-	-	-	-	-	-	142,498	-
<b>Total revenue</b>	<b>372,261</b>	<b>155,435</b>	<b>23,939</b>	<b>33,430</b>	<b>69,204</b>	<b>26,777</b>	<b>22,500</b>	<b>48,226</b>	<b>95,637</b>	<b>138,243</b>	<b>30,363</b>	<b>182,465</b>	<b>-</b>	<b>-</b>
Expenses:														
Salaries	150,491	12,194	884	26,101	51,197	-	-	34,134	71,477	78,974	21,709	15,770	5,084	-
Employee benefits	29,651	2,219	8,334	3,557	5,674	-	-	6,907	10,798	24,046	4,861	9,658	942	-
Professional fees	43,125	-	361	-	-	-	-	-	-	-	-	-	-	-
Supplies	22,790	200	846	-	101	4,418	5,704	-	-	4,569	-	7,727	-	-
Telephone	3,470	189	160	-	434	3,064	-	-	-	-	150	1,443	-	-
Postage and shipping	-	-	19	-	-	-	-	-	-	-	-	56	-	-
Occupancy	29,400	2,384	1,462	-	-	12,950	13,416	-	-	17,648	-	20,162	-	-
Furniture and equipment	3,659	297	-	-	-	1,987	3,231	-	-	378	-	7,924	-	-
Depreciation and amortization	5,708	463	7,898	-	-	-	-	-	-	-	-	96,021	-	-
Printing and subscriptions	26	-	93	-	-	-	149	-	-	-	-	102	-	-
Travel	11,073	-	2,595	-	1,450	1,798	-	-	-	17	-	1,647	623	-
Conferences and training	570	-	1,287	-	820	-	-	-	-	43	-	1,121	-	-
Client assistance	8,670	-	-	-	-	2,560	-	-	-	-	-	3,711	-	-
Professional dues	890	-	-	-	-	-	-	-	-	-	-	-	-	-
Miscellaneous expense	-	-	-	-	-	-	-	-	-	-	-	44	-	-
Interest expense	-	-	-	-	-	-	-	-	-	-	-	-	-	-
Subcontract	62,331	-	-	-	-	-	-	-	-	-	-	-	-	-
Administration	27,925	2,131	-	3,772	9,528	-	-	7,185	13,362	12,568	3,643	-	1,029	-
<b>Total expenses</b>	<b>399,779</b>	<b>20,077</b>	<b>23,939</b>	<b>33,430</b>	<b>69,204</b>	<b>26,777</b>	<b>22,500</b>	<b>48,226</b>	<b>95,637</b>	<b>138,243</b>	<b>30,363</b>	<b>165,386</b>	<b>7,678</b>	<b>-</b>

# Community Advocates, Inc.

## Schedule of Revenue and Expense by Program (Cont.)

Year Ended December 31, 2016

	Autumn West	HONC	Autumn West	HONC	HONC	HONC	HONC	HONC	HONC	HONC	HONC	My Home	Total
Revenue:													
Contributions	\$ -	\$ -	\$ -	\$ -	\$ -	\$ -	\$ -	\$ -	\$ -	\$ -	\$ -	\$ -	\$ 533,531
United Way	-	-	-	-	-	-	-	-	-	-	-	-	229,675
Foundation grants	-	-	-	-	-	-	-	-	-	-	-	-	33,590
Federal grants	-	-	449,056	-	-	-	-	-	-	-	-	-	1,674,741
State of Wisconsin grants	-	-	-	-	-	-	-	-	-	-	-	-	3,684,688
Milwaukee County grants	-	-	-	145,000	-	-	25,000	-	-	-	-	130,913	3,460,811
City of Milwaukee grants	-	14,369	-	-	8,638	5,170	-	24,950	39,257	-	-	-	1,040,250
Other grants and revenue	-	-	-	-	-	-	-	-	-	-	-	-	316,884
Interest income	-	-	-	-	-	-	-	-	-	-	-	-	1,217
Miscellaneous revenue	191	-	-	-	-	-	-	-	-	-	-	31,410	789,049
Releases from restriction	-	-	-	-	-	-	-	-	-	3,980	-	-	867,201
<b>Total revenue</b>	<b>191</b>	<b>14,369</b>	<b>449,056</b>	<b>145,000</b>	<b>8,638</b>	<b>5,170</b>	<b>25,000</b>	<b>24,950</b>	<b>39,257</b>	<b>3,980</b>	<b>162,323</b>	<b>12,631,637</b>	
Expenses:													
Salaries	-	11,392	277,510	96,502	7,982	4,015	-	23,260	31,163	3,909	101,588	-	4,556,874
Employee benefits	-	872	51,372	19,725	656	295	-	1,690	2,384	3,513	23,002	-	806,803
Professional fees	-	-	-	-	-	-	-	-	-	-	4,448	-	798,981
Supplies	191	-	10,834	5,147	-	-	-	-	-	711	816	-	240,927
Telephone	-	-	2,139	1,170	-	-	-	-	-	1,608	1,995	-	90,623
Postage and shipping	-	-	-	-	-	-	-	-	-	-	687	-	23,109
Occupancy	-	-	46,606	138	-	-	-	-	-	430	6,979	-	783,701
Furniture and equipment	-	-	4,751	750	-	-	-	-	-	360	2,252	-	143,358
Depreciation and amortization	-	-	-	-	-	-	4,546	-	-	-	2,226	-	304,058
Printing and subscriptions	-	-	-	-	-	-	-	-	-	-	-	-	14,427
Travel	-	-	1,344	3,619	-	-	1,611	-	-	646	611	-	132,045
Conferences and training	-	-	-	695	-	-	-	-	3,064	299	-	-	110,737
Client assistance	-	-	1,920	3,325	-	-	-	-	2,646	1,080	75	-	1,160,302
Professional dues	-	-	-	-	-	-	-	-	-	-	-	-	38,586
Miscellaneous expense	-	-	-	-	-	-	-	-	-	-	-	-	19,163
Interest expense	-	-	-	-	-	-	-	-	-	-	-	-	54,302
Subcontract	-	-	-	-	-	-	-	-	-	-	-	-	2,853,655
Administration	-	2,105	52,580	16,726	-	860	-	-	-	10,863	17,659	-	-
<b>Total expenses</b>	<b>191</b>	<b>14,369</b>	<b>449,056</b>	<b>147,797</b>	<b>8,638</b>	<b>5,170</b>	<b>6,157</b>	<b>24,950</b>	<b>39,257</b>	<b>23,419</b>	<b>162,338</b>	<b>12,131,651</b>	



1976 2016

COMMUNITY ADVOCATES  
Where Meeting Basic Needs Inspires Hope  
40th Anniversary

728 North James Lovell Street  
Milwaukee, WI 53233

NONPROFIT  
ORGANIZATION  
U.S. POSTAGE  
PAID  
MILWAUKEE, WI  
PERMIT NO. 4659

# FOUR DECADES OF SERVICE

## 2016 BOARD OF DIRECTORS

**Pamela Klein, President**  
Fresh Coast Partners LLC

**Sheree Dallas Branch, Vice President**  
ABRAZO Multi-Cultural Marketing and  
Communications Firm

**Sandra Samse, Treasurer**  
Deloitte LLP

**Bryan House, Secretary**  
Foley & Lardner LLP

**Marquette Baylor**  
Aurora Health Care

**Timothy Charek**  
National Association of Catholic Chaplains

**Anne DeLeo**  
Community Volunteer

**Valerie Gabriel**  
Community Volunteer

**Dr. Stephen Hargarten**  
Medical College of Wisconsin

**Erin Henry**  
Northwestern Mutual

**Betsy Hoylman**  
Northwestern Mutual

**Sharon Jordan**  
Direct Supply

**Jim Liedtke**  
Consumer Representative

**Thomas Salemy**  
Marquette Associates

**Esther Shin**  
Urban Strategies

**Thelma Sias**  
We Energies

**Kate Venne**  
Brady Corporation

**Jodi Wire**  
We Energies

## 2016 ADMINISTRATION & LEADERSHIP

**Andi Mallmann-Elliott**  
Chief Executive Officer

**Maudwella Kirkendoll**  
Chief Operating Officer

**William Koch**  
Chief Financial Officer

**Kari Lerch**  
Deputy Director, Public Policy Institute

**Mark Rosnow**  
Director, IT Services

**Steve Schultz**  
Strategic Development Director

**Kris Uhen**  
Development Director

