



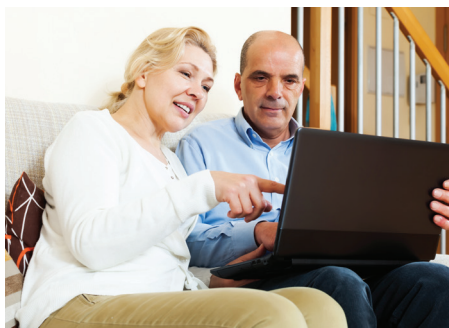
Applying is Easy!

Make your appointment

EnergyAssistanceMKE.org

(414) 270-4-MKE (4653)

In Person



WISCONSIN HOME ENERGY ASSISTANCE PROGRAM

**Application Period
October 1 - May 15**

About Us

The Energy Assistance program offers a one-time payment during the heating season to help qualified Milwaukee County residents make their energy bills more affordable. The funding pays a portion of energy costs, but the payment is not intended to cover the entire energy cost of a residence.

The amount of the energy assistance payment varies depending on a variety of factors, including the household's size, income and energy costs. In most cases the energy assistance benefit is paid directly to the household's energy supplier.

2017 - 18 Income Guidelines

Household Size	1 Month	3 Month	Annual
1	\$2,217	\$6,650	\$26,601
2	\$2,899	\$8,696	\$34,785
3	\$3,581	\$10,743	\$42,970
4	\$4,263	\$12,789	\$51,155
5	\$4,945	\$14,835	\$59,340
6	\$5,627	\$16,881	\$67,525
7	\$5,755	\$17,265	\$69,059
8	\$5,883	\$17,649	\$70,594







What to Bring

A complete list of items can be found on our website:
www.energyassistancemke.org.

- Photo ID (recommended; mandatory for **first time applicants**)
- Social Security Numbers and dates of birth for everyone in the household
- Current gas, electric or oil energy bill:
 - Heat included in the rent, your current lease or letter from your landlord is required.
 - Rent Assistance, you will need proof of your total rent amount, the amount of rent assistance and utility allowance.
- Proof of all income sources for the entire household's gross income for the three months prior to application month (child support, wages, pension, unemployment, etc.)
- Tax forms and schedules from the prior year are required for the following types of employment or income:
 - Seasonal or school year jobs such as landscaping, school bus drivers, food service workers, or snow removal.
 - Self-employment for business, partnership, corporation or LLC including rental income. (Net income is counted for self-employment when taxes are provided).
 - Recurring payments such as dividends, interest or royalties.



Locations

-  **1 North**
6918 W. Brown Deer Road
-  **2 Northwest**
4906 W Fond du Lac Ave.
-  **3 Downtown**
728 N James Lovell St.
-  **4 West Allis**
6761 W Greenfield Ave.
-  **5 Southeast**
2701 S Chase Ave.
-  **6 South**
5663 S 27th St.

Hours

Regular Hours of Operations Monday-Friday, 8 a.m. - 5 p.m.

Make an appointment or walk in during our business hours.
Last applicant taken 30 minutes before closing and subject to availability.

Closed on major holidays.

Additional Services

Did you know? If you are eligible for Energy Assistance you may also qualify for other services such as furnace repair/replacement, weatherization or crisis benefits? Please see our Additional Services flyer for more information.

Extended Hours

Fall & Spring October 1 - October 31, 2017 April 15 - May 15, 2018

Monday:	7:30 a.m. - 7:00 p.m.
Tuesday:	7:30 a.m. - 7:00 p.m.
Wednesday:	7:30 a.m. - 5:00 p.m.
Thursday:	7:30 a.m. - 7:00 p.m.
Friday:	7:30 a.m. - 5:00 p.m.
Saturday:	8:00 a.m. - 12:00 p.m.



homeenergy+



UMOS
Building Better Futures



 (414) 270-4-MKE

For more information or help after hours dial 211.